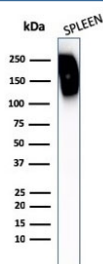


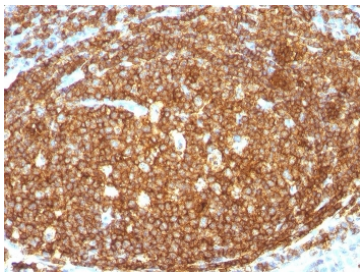
## CD45RB Antibody (V8049)

Catalog No.	Formulation	Size
V8049-100UG	0.2 mg/ml in 1X PBS with 0.1 mg/ml BSA (US sourced) and 0.05% sodium azide	100 ug
V8049-20UG	0.2 mg/ml in 1X PBS with 0.1 mg/ml BSA (US sourced) and 0.05% sodium azide	20 ug
V8049SAF-100UG	1 mg/ml in 1X PBS; BSA free, sodium azide free	100 ug

[Bulk quote request](#)

<b>Availability</b>	1-3 business days
<b>Species Reactivity</b>	Human
<b>Format</b>	Purified
<b>Host</b>	Rabbit
<b>Clonality</b>	Polyclonal (rabbit origin)
<b>Isotype</b>	Rabbit IgG
<b>Purity</b>	Protein A affinity chromatography
<b>UniProt</b>	P08575
<b>Localization</b>	Cell surface, cytoplasmic
<b>Applications</b>	Western Blot : 1-2ug/ml Immunohistochemistry (FFPE) : 1-2ug/ml
<b>Limitations</b>	This CD45RB antibody is available for research use only.





IHC staining of FFPE human tonsil with CD45RB antibody. HIER: steam section in pH 9 10mM Tris with 1mM EDTA for 20 min and allow to cool prior to staining.

## Description

CD45R, also designated CD45 and PTPRC, has been identified as a transmembrane glycoprotein, broadly expressed among hematopoietic cells. Multiple isoforms of CD45R are distributed throughout the immune system according to cell type. These isoforms arise because of alternative splicing of exons 4, 5, and 6. The corresponding protein domains are characterized by the binding of monoclonal antibodies specific for CD45RA (exon 4), CD45RB (exon 5), CD45RC (exon 6) and CD45RO (exons 4 to 6 spliced out). The variation in these isoforms is localized to the extracellular domain of CD45R, while the intracellular domain is conserved. CD45RB is expressed on mature B-lymphocytes and the majority of lymphomas and leukemias of B-cell origin.

## Application Notes

Optimal dilution of the CD45RB antibody should be determined by the researcher.

## Immunogen

Human CD45RB protein was used as the immunogen for the CD45RB antibody.

## Storage

Store the CD45RB antibody at 2-8°C (with azide) or aliquot and store at -20°C or colder (without azide).