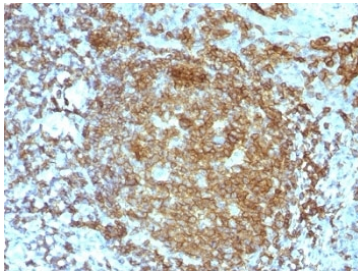


CD45RA Antibody [clone PTPRC/818] (V2403)

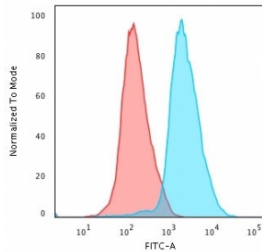
Catalog No.	Formulation	Size
V2403-100UG	0.2 mg/ml in 1X PBS with 0.1 mg/ml BSA (US sourced) and 0.05% sodium azide	100 ug
V2403-20UG	0.2 mg/ml in 1X PBS with 0.1 mg/ml BSA (US sourced) and 0.05% sodium azide	20 ug
V2403SAF-100UG	1 mg/ml in 1X PBS; BSA free, sodium azide free	100 ug
V2403IHC-7ML	Prediluted in 1X PBS with 0.1 mg/ml BSA (US sourced) and 0.05% sodium azide; *For IHC use only*	7 ml

[Bulk quote request](#)

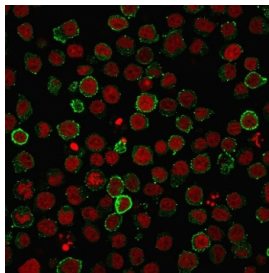
Species Reactivity	Human
Format	Purified
Host	Mouse
Clonality	Monoclonal (mouse origin)
Isotype	Mouse IgG2a, kappa
Clone Name	PTPRC/818
Purity	Protein G affinity chromatography
Buffer	1X PBS, pH 7.4
UniProt	P08575
Localization	Cell surface
Applications	Flow Cytometry : 0.5-1ug/10 ⁶ cells Immunofluorescence : 1-2ug/ml Western Blot : 1-2ug/ml Immunohistochemistry (FFPE) : 0.5-1ug/ml for 30 min at RT
Limitations	This CD45RA antibody is available for research use only.



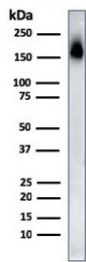
IHC test of FFPE human tonsil probed with CD45RA antibody. HIER: boil tissue sections in 10mM citrate buffer, pH 6, for 10-20 min followed by cooling at RT for 20 minutes.



Flow cytometry testing of PFA-fixed human Jurkat cells with CD45RA antibody (clone PTPRC/818); Red=isotype control, Blue= CD45RA antibody.



Immunofluorescence staining of PFA-fixed human Jurkat cells with CD45RA antibody (clone PTPRC/818, green) and Reddot nuclear stain (red).



Western blot testing of human spleen lysate with CD45RA antibody (clone PTPRC/818). Expected molecular weight: 147-220 kDa depending on glycosylation level.

Description

CD45RA is an isoform of the human leukocyte common antigen (CD45). Human CD45 contains three exons which encode peptide segments designated A, B and C, respectively. The differential splicing of the exons generates at least five isoforms, ABC, AB, BC, B and O. This antibody reacts with ABC and BC isoforms. CD45RA is expressed on 40-50% of peripheral CD4⁺ T-cells, 50% of peripheral CD8⁺ T-cells, B-cells, and leukemic B-cell lines. T-cells expressing CD45RA are naive or virgin T-cells. T-cells expressing CD45RO are memory T-cells. CD45RA and CD45RO define complementary, predominantly non-overlapping populations of resting peripheral T-cells. This MAb is useful in study on the subpopulation of CD4⁺ or CD8⁺ T-cells. It can especially be used to differentiate T-cell lymphomas (CD45RO +ve) from B cell lymphomas (CD45RA +ve).

Application Notes

Due to variation in protocol and secondary antibody used, the CD45RA antibody may need to be titrated for optimal performance.

1. The prediluted format is supplied in a dropper bottle and is optimized for use in IHC. After epitope retrieval step (if required), drip mAb solution onto the tissue section and incubate at RT for 30 min.

Immunogen

Stimulated human leukocytes were used as immunogen for this CD45RA antibody.

Storage

The CD45RA antibody (with azide) can be stored at 2-8oC. The azide-free format should be aliquoted and stored at -20oC or colder.

References (2)