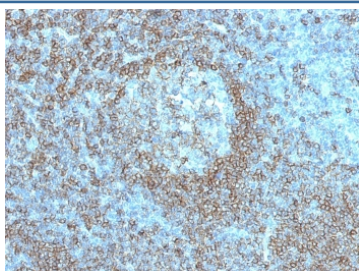


CD45RA Antibody [clone K4B5] (V8043)

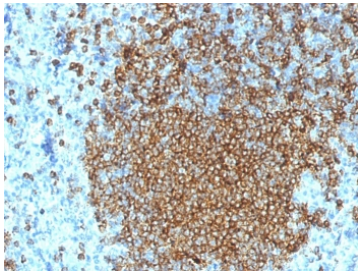
| Catalog No. | Formulation | Size |
|----------------|--|--------|
| V8043-100UG | 0.2 mg/ml in 1X PBS with 0.1 mg/ml BSA (US sourced) and 0.05% sodium azide | 100 ug |
| V8043-20UG | 0.2 mg/ml in 1X PBS with 0.1 mg/ml BSA (US sourced) and 0.05% sodium azide | 20 ug |
| V8043SAF-100UG | 1 mg/ml in 1X PBS; BSA free, sodium azide free | 100 ug |

[Bulk quote request](#)

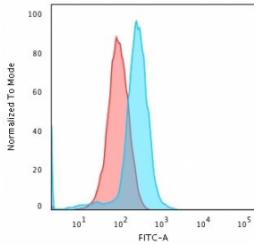
| | |
|---------------------------|--|
| Availability | 1-3 business days |
| Species Reactivity | Human |
| Format | Purified |
| Clonality | Monoclonal (mouse origin) |
| Isotype | Mouse IgG2a, kappa |
| Clone Name | K4B5 |
| Purity | Protein G affinity chromatography |
| UniProt | P08575 |
| Localization | Cell surface, cytoplasmic |
| Applications | Flow Cytometry : 1-2ug/10 ⁶ cells Immunofluorescence : 1-2ug/ml Western Blot : 1-2ug/ml Immunohistochemistry (FFPE) : 1-2ug/ml |
| Limitations | This CD45RA antibody is available for research use only. |



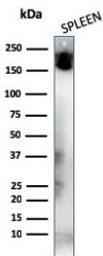
IHC staining of FFPE human tonsil with CD45RA antibody (clone K4B5). HIER: steam section in pH 9 10mM Tris with 1mM EDTA for 20 min and allow to cool prior to staining.



IHC staining of FFPE human spleen with CD45RA antibody (clone K4B5). HIER: steam section in pH 9 10mM Tris with 1mM EDTA for 20 min and allow to cool prior to staining.



Flow cytometry testing of human Jurkat cells with CD45RA antibody (clone K4B5); Red=isotype control, Blue= CD45RA antibody.



Western blot testing of human spleen lysate with CD45RA antibody (clone K4B5). Expected molecular weight: 147-220 kDa depending on glycosylation level.

Description

Recognizes a protein of 205kDa-220kDa, identified as CD45RA. CD45RA is isoforms of the human leukocyte common antigen (CD45). Human CD45 contains three exons which encode peptide segments designated A, B and C, respectively. The differential splicing of the exons generates at least five isoforms, ABC, AB, BC, B and O. This antibody reacts with ABC and BC isoforms. CD45RA is expressed on 40-50% of peripheral CD4+ T-cells, 50% of peripheral CD8+ T-cells, B-cells, and leukemic B-cell lines. T-cells expressing CD45RA are naive or virgin T-cells. T-cells expressing CD45RO are memory T-cells. CD45RA and CD45RO define complementary, predominantly non-overlapping populations of resting peripheral T-cells. This MAbs is useful in study on the subpopulation of CD4+ or CD8+ T-cells. It can especially be used to differentiate T-cell lymphomas (CD45RO +ve) from B cell lymphomas (CD45RA +ve).

Application Notes

Optimal dilution of the CD45RA antibody should be determined by the researcher.

Immunogen

Stimulated human leukocytes were used as the immunogen for the CD45RA antibody.

Storage

Store the CD45RA antibody at 2-8°C (with azide) or aliquot and store at -20°C or colder (without azide).

