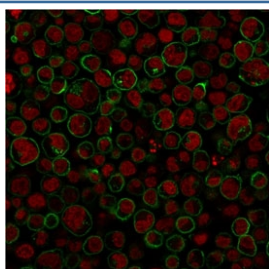


CD45RA Antibody [clone 111-1C5] (V2409)

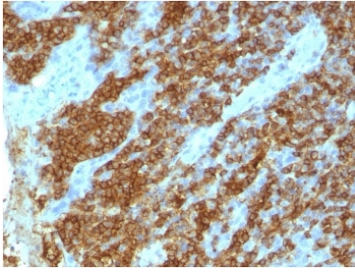
Catalog No.	Formulation	Size
V2409-100UG	0.2 mg/ml in 1X PBS with 0.1 mg/ml BSA (US sourced) and 0.05% sodium azide	100 ug
V2409-20UG	0.2 mg/ml in 1X PBS with 0.1 mg/ml BSA (US sourced) and 0.05% sodium azide	20 ug
V2409SAF-100UG	1 mg/ml in 1X PBS; BSA free, sodium azide free	100 ug
V2409IHC-7ML	Prediluted in 1X PBS with 0.1 mg/ml BSA (US sourced) and 0.05% sodium azide; *For IHC use only*	7 ml

[Bulk quote request](#)

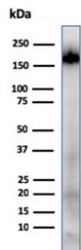
Species Reactivity	Human
Format	Purified
Clonality	Monoclonal (mouse origin)
Isotype	Mouse IgG1, kappa
Clone Name	111-1C5
Purity	Protein G affinity chromatography
Buffer	1X PBS, pH 7.4
UniProt	P08575
Localization	Cell surface
Applications	Flow Cytometry : 1-2ug/10 ⁶ cells Immunofluorescence : 1-2ug/ml Western Blot : 1-2ug/ml Immunohistochemistry (FFPE) : 1-2ug/ml for 30 min at RT
Limitations	This CD45RA antibody is available for research use only.



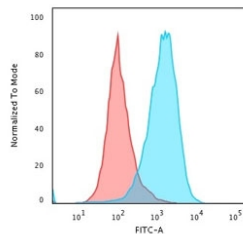
Immunofluorescent staining of PFA-fixed human Raji cells with CD45RA antibody (clone 111-1C5, green) and Reddot nuclear stain (red).



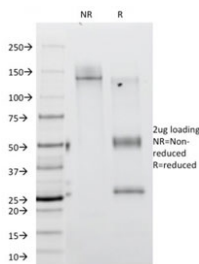
IHC staining of FFPE human tonsil tissue with CD45RA antibody (clone 111-1C5). HIER: boil tissue sections in pH 9 10mM Tris with 1mM EDTA for 20 min and allow to cool before testing.



Western blot testing of human spleen tissue lysate with CD45RA antibody. Expected molecular weight: 147-220 kDa depending on glycosylation level.



Flow cytometry testing of PFA-fixed human Raji cells with anti-CD45RA antibody (clone 111-1C5); Red=isotype control, Blue= anti-CD45RA antibody.



SDS-PAGE analysis of purified, BSA-free CD45RA antibody (clone 111-1C5) as confirmation of integrity and purity.

Description

CD45RA is an isoform of the human leukocyte common antigen (CD45). Human CD45 contains three exons which encode peptide segments designated A, B and C, respectively. The differential splicing of the exons generates at least five isoforms, ABC, AB, BC, B and O. This antibody reacts with ABC and BC isoforms. CD45RA is expressed on 40-50% of peripheral CD4⁺ T-cells, 50% of peripheral CD8⁺ T-cells, B-cells, and leukemic B-cell lines. T-cells expressing CD45RA are naive or virgin T-cells. T-cells expressing CD45RO are memory T-cells. CD45RA and CD45RO define complementary, predominantly non-overlapping populations of resting peripheral T-cells. This MAbs is useful in study on the subpopulation of CD4⁺ or CD8⁺ T-cells. It can especially be used to differentiate T-cell lymphomas (CD45RO +ve) from B cell lymphomas (CD45RA +ve).

Application Notes

Due to variation in protocol and secondary antibody used, the CD45RA antibody may need to be titrated for optimal performance.

1. The prediluted format is supplied in a dropper bottle and is optimized for use in IHC. After epitope retrieval step (if required), drip mAb solution onto the tissue section and incubate at RT for 30 min.

Immunogen

Stimulated human leukocytes were used as immunogen for this CD45RA antibody.

Storage

The CD45RA antibody (with azide) can be stored at 2-8oC. The azide-free format should be aliquoted and stored at -20oC or colder.

References (2)