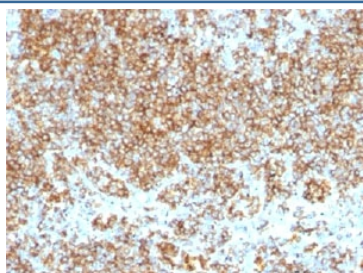


## CD45 Antibody Cocktail [clone SPM569 + SPM570] (V2402)

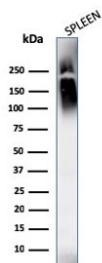
Catalog No.	Formulation	Size
V2402-100UG	0.2 mg/ml in 1X PBS with 0.1 mg/ml BSA (US sourced) and 0.05% sodium azide	100 ug
V2402-20UG	0.2 mg/ml in 1X PBS with 0.1 mg/ml BSA (US sourced) and 0.05% sodium azide	20 ug
V2402SAF-100UG	1 mg/ml in 1X PBS; BSA free, sodium azide free	100 ug

[Bulk quote request](#)

<b>Species Reactivity</b>	Human
<b>Format</b>	Purified
<b>Host</b>	Mouse
<b>Clonality</b>	Monoclonal (mouse origin)
<b>Isotype</b>	Mouse IgG1, kappa
<b>Clone Name</b>	SPM569 + SPM570
<b>Purity</b>	Protein G affinity chromatography
<b>UniProt</b>	P08575
<b>Localization</b>	Cell surface and cytoplasmic
<b>Applications</b>	Western Blot : 1-2ug/ml Immunohistochemistry (FFPE) : 1-2ug/ml for 30 min at RT
<b>Limitations</b>	This CD45 antibody cocktail is available for research use only.



IHC test of FFPE human tonsil probed with CD45 antibody cocktail



Western blot testing of human spleen lysate with CD45 antibody cocktail (clones SPM569 + SPM570). Expected molecular weight: 147-220 kDa depending on glycosylation level.

## Description

CD45, also referred to as CD45R and PTPRC (Protein tyrosine phosphatase receptor type C), has been identified as a transmembrane glycoprotein, broadly expressed among hematopoietic cells. Along with other members of the PTP family, it regulates a number of cellular processes including cell differentiation, growth and mitotic cycle, and is an essential regulator of B- and T-cell antigen receptor-mediated activation.

Multiple isoforms of CD45 are distributed throughout the immune system and arise due to alternative splicing of exons located in the N-terminus. CD45RA contains the A exon and is a naive T-cell marker which may help prevent autoimmune disease. CD45RB contains B and stains most leukemias and lymphomas. CD45RC contains C and stains thymocytes, monocytes and dendritic cells. CD45RO doesn't contain A, B or C and is a marker of activated T-cells that can be used to classify and diagnose and classify lymphomas. This antibody cocktail will bind to all CD45 isoforms. The variation in these isoforms is localized to the extracellular domain, with the intracellular domain being conserved. Antibody to CD45 is useful in differential diagnosis of lymphoid tumors from non-hematopoietic undifferentiated neoplasms.

## Application Notes

Due to variation in protocol and secondary antibody used, the CD45 antibody cocktail may need to be titrated for optimal performance.

1. FFPE staining requires boiling tissue sections in pH 9 10mM Tris with 1mM EDTA for 10-20 min followed by cooling at RT for 20 minutes.

## Immunogen

Human B- and T-lymphoma cells were used as the immunogen for the CD45 antibody cocktail.

## Storage

CD45 antibody cocktail (with azide) can be stored at 2-8°C. The azide-free format should be aliquoted and stored at -20°C or colder.

## References (2)

