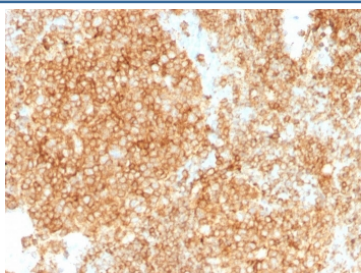


CD45 Antibody Cocktail [clone PTPRC/1147 + PTPRC/1460] (V8042)

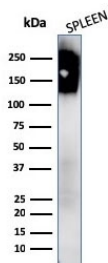
Catalog No.	Formulation	Size
V8042-100UG	0.2 mg/ml in 1X PBS with 0.1 mg/ml BSA (US sourced) and 0.05% sodium azide	100 ug
V8042-20UG	0.2 mg/ml in 1X PBS with 0.1 mg/ml BSA (US sourced) and 0.05% sodium azide	20 ug
V8042SAF-100UG	1 mg/ml in 1X PBS; BSA free, sodium azide free	100 ug

Bulk quote request

Availability	1-3 business days
Species Reactivity	Human
Format	Purified
Clonality	Monoclonal (mouse origin)
Isotype	Mouse IgG1, kappa + Mouse IgG1, kappa
Clone Name	PTPRC/1147 + PTPRC/1460
Purity	Protein G affinity chromatography
UniProt	P08575
Localization	Cell surface, cytoplasmic
Applications	Western Blot : 1-2ug/ml Immunohistochemistry (FFPE) : 1-2ug/ml
Limitations	This CD45 antibody is available for research use only.



IHC staining of FFPE human tonsil with CD45 antibody. HIER: boil tissue sections in pH 9 10mM Tris with 1mM EDTA for 10-20 min and allow to cool before testing.



Western blot testing of human spleen lysate with CD45 antibody. Expected molecular weight: 147-220 kDa depending on glycosylation level.

Description

Recognizes the CD45 leukocyte common antigen (LCA) family which is comprised of at least four isoforms of membrane glycoproteins (220, 205, 190, 180kDa) expressed on hematopoietic cell lines but absent on non-hematopoietic cell lines, normal and malignant non-hematopoietic tissues. The intracellular portions of these molecules have protein phosphatase activity and are involved in regulation of transmembrane signals. Antibody to CD45 is useful in differential diagnosis of lymphoid tumors from non-hematopoietic undifferentiated neoplasms. A positive result with this MAb is highly indicative of lymphoid or myeloid origin. Certain types of lymphoid neoplasms may lack CD45 (Hodgkin lymphoma, some T-cell lymphomas, and some leukemias) so its absence does not rule out a hematology tumor. This antibody is expressed almost exclusively by cells of hematopoietic lineage and is present in most benign and malignant lymphocytes as well as plasma cell precursors.

Application Notes

Optimal dilution of the CD45 antibody should be determined by the researcher.

Immunogen

Human recombinant full-length CD45 protein was used as the immunogen for the CD45 antibody.

Storage

Store the CD45 antibody at 2-8°C (with azide) or aliquot and store at -20°C or colder (without azide).