

## CD44 Antibody [clone SPM521] (V3010)

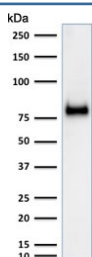
Catalog No.	Formulation	Size
V3010-100UG	0.2 mg/ml in 1X PBS with 0.1 mg/ml BSA (US sourced) and 0.05% sodium azide	100 ug
V3010-20UG	0.2 mg/ml in 1X PBS with 0.1 mg/ml BSA (US sourced) and 0.05% sodium azide	20 ug
V3010SAF-100UG	1 mg/ml in 1X PBS; BSA free, sodium azide free	100 ug
V3010IHC-7ML	Prediluted in 1X PBS with 0.1 mg/ml BSA (US sourced) and 0.05% sodium azide; *For IHC use only*	7 ml



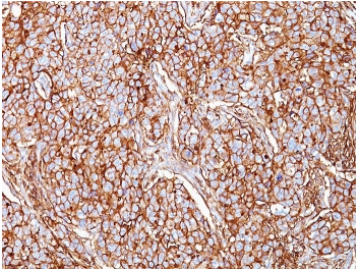
Citations (1)

[Bulk quote request](#)

Availability	1-3 business days
Species Reactivity	Human
Format	Purified
Clonality	Monoclonal (mouse origin)
Isotype	Mouse IgG2a, kappa
Clone Name	SPM521
Purity	Protein G affinity chromatography
UniProt	P16070
Localization	Cell surface, cytoplasmic
Applications	Western Blot : 1-2ug/ml Immunohistochemistry (FFPE) : 0.25-0.5ug/ml for 30 min at RT
Limitations	This CD44 antibody is available for research use only.



Western blot testing of human HeLa cell lysate with CD44 antibody (clone SPM521).  
Expected molecular weight ~81 kDa.



IHC: Formalin-fixed, paraffin-embedded human breast carcinoma stained with CD44 antibody (clone SPM521).

## Description

CD44 participates in a wide variety of cellular functions including lymphocyte activation, recirculation and homing, hematopoiesis, and tumor metastasis. Variations in CD44 are reported as cell surface markers for some breast and prostate cancer stem cells. In breast cancer research CD44<sup>+</sup>/CD24<sup>-</sup> expression is commonly used as a marker for breast CSCs and is used to sort breast cancer cells into a population enriched in cells with stem-like characteristics and has been seen as an indicator of increased survival time in epithelial ovarian cancer patients. [Wiki]

## Application Notes

Optimal dilution of the CD44 antibody should be determined by the researcher.

1. Staining of formalin-fixed tissues requires boiling tissue sections in pH 9 10mM Tris with 1mM EDTA for 10-20 min followed by cooling at RT for 20 min.
2. The prediluted format is supplied in a dropper bottle and is optimized for use in IHC. After epitope retrieval step (if required), drip mAb solution onto the tissue section and incubate at RT for 30 min.

## Immunogen

Stimulated human leukocytes were used as the immunogen for the CD44 antibody.

## Storage

Store the CD44 antibody at 2-8°C (with azide) or aliquot and store at -20°C or colder (without azide).