

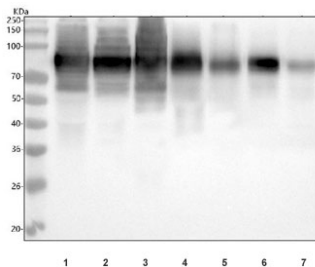
## CD44 Antibody for WB Multi-Species / Cross-Species Detection Antibody [clone 28C33] (RQ8279)

Catalog No.	Formulation	Size
RQ8279	Antibody in PBS with 0.02% sodium azide, 50% glycerol and 0.4-0.5mg/ml BSA	100 ul

Recombinant **RABBIT MONOCLONAL**

[Bulk quote request](#)

<b>Availability</b>	1-3 business days
<b>Species Reactivity</b>	Human, Mouse, Rat
<b>Format</b>	Purified
<b>Host</b>	Rabbit
<b>Clonality</b>	Recombinant Rabbit Monoclonal
<b>Isotype</b>	Rabbit IgG
<b>Clone Name</b>	28C33
<b>Purity</b>	Affinity chromatography
<b>UniProt</b>	P16070
<b>Applications</b>	Western Blot : 1:500-1:2000
<b>Limitations</b>	This CD44 Antibody for WB Multi-Species / Cross-Species Detection Antibody is available for research use only.



CD44 Antibody Multi-Species WB. Western blot analysis of CD44 / CD44 antigen expression using antibody. Lane 1: human U-87 MG cell lysate, Lane 2: human HeLa cell lysate, Lane 3: human PANC-1 cell lysate, Lane 4: rat spleen lysate, Lane 5: rat thymus lysate, Lane 6: mouse spleen lysate, Lane 7: mouse thymus lysate. A band is detected at approximately 80-95 kDa, consistent with the predicted molecular weight of CD44 (CD44 / CD44 antigen). CD44 is a glycosylated transmembrane protein, and the slightly diffuse band appearance reflects glycosylation-dependent variation in electrophoretic migration. The consistent detection across human, rat, and mouse samples supports CD44 expression in both epithelial and lymphoid tissues.

### Description

CD44 antigen (CD44), also known as homing cell adhesion molecule (HCAM), is a transmembrane glycoprotein that functions as a receptor for hyaluronic acid and mediates cell adhesion, migration, and extracellular matrix interactions. It is broadly expressed on epithelial and immune cells, where it contributes to cell surface communication and tissue

organization. CD44 Antibody for WB Multi-Species / Cross-Species Detection Antibody is designed to detect CD44 expression in western blot applications across human, mouse, and rat samples, enabling comparative protein analysis in multi-species experimental systems.

CD44 antibody, also referred to as HCAM antibody or Hermes antigen antibody, recognizes a glycosylated cell surface protein that typically migrates near or above its predicted core molecular weight depending on sample type and post-translational modification state. Recombinant rabbit monoclonal antibody clone 28C33 is supported by western blot testing in human, mouse, and rat lysates, providing a reliable tool for cross-species detection of CD44 in both cell lines and tissue samples.

Functionally, CD44 mediates binding to hyaluronic acid and other extracellular matrix components, supporting cellular adhesion, migration, and interaction with tissue environments. In western blot applications, detection of CD44 across species allows direct comparison of expression patterns and molecular weight behavior between experimental models and human-derived samples. This CD44 Antibody for WB Multi-Species is particularly suited for evaluating conserved protein expression, band migration consistency, and glycosylation-dependent variation across human and rodent systems.

CD44 expression in the tested lysates demonstrates consistent detection across human, mouse, and rat samples, supporting its use in translational research workflows. Cross-species band alignment within a similar molecular weight range reinforces the conserved structure of CD44 while allowing for species- and tissue-specific variation in expression level and modification. Detection of CD44 in this context supports comparative studies of protein expression, disease modeling, and validation of experimental systems across species.

Structurally, CD44 consists of an extracellular ligand-binding domain, a transmembrane segment, and a cytoplasmic tail involved in intracellular signaling and cytoskeletal interactions. Alternative splicing generates multiple isoforms, and glycosylation of the extracellular domain contributes to variation in observed molecular weight on SDS-PAGE. An antibody targeting CD44 is suitable for detecting this glycoprotein in western blot and related protein analysis applications, with clone 28C33 providing a strong option for multi-species CD44 detection and comparative protein studies.

This CD44 antibody is part of a broader [CD44 antibody panel](#) offered by NSJ Bioreagents.

## Application Notes

Optimal dilution of the CD44 Antibody for WB Multi-Species / Cross-Species Detection Antibody should be determined by the researcher.

## Immunogen

A synthetic peptide derived from human CD44 was used as the immunogen for the CD44 antibody.

## Storage

Store the CD44 antibody at -20oC.

## Alternate Names

CD44 antibody, CD44 WB antibody, CD44 multi-species antibody, HCAM antibody, Hermes antigen antibody

