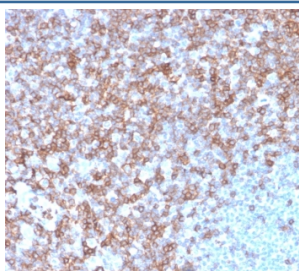


CD43 Antibody [clone SPN/3388] (V7576)

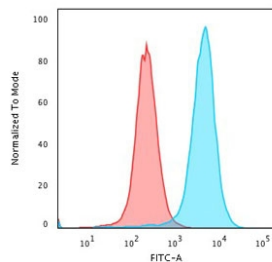
Catalog No.	Formulation	Size
V7576-100UG	0.2 mg/ml in 1X PBS with 0.1 mg/ml BSA (US sourced) and 0.05% sodium azide	100 ug
V7576-20UG	0.2 mg/ml in 1X PBS with 0.1 mg/ml BSA (US sourced) and 0.05% sodium azide	20 ug
V7576SAF-100UG	1 mg/ml in 1X PBS; BSA free, sodium azide free	100 ug
V7576IHC-7ML	Prediluted in 1X PBS with 0.1 mg/ml BSA (US sourced) and 0.05% sodium azide; *For IHC use only*	7 ml

[Bulk quote request](#)

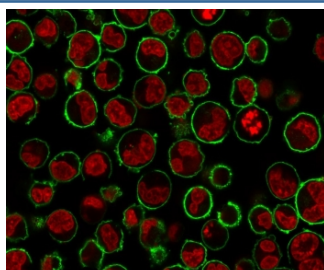
Availability	1-3 business days
Species Reactivity	Human
Format	Purified
Clonality	Monoclonal (mouse origin)
Isotype	Mouse IgG1, kappa
Clone Name	SPN/3388
Purity	Protein G affinity chromatography
UniProt	P16150
Localization	Cell surface
Applications	Flow Cytometry : 1-2ug/million cells Immunofluorescence : 1-2ug/ml Western Blot : 1-2ug/ml Immunohistochemistry (FFPE) : 1-2ug/ml for 30 min at RT
Limitations	This CD43 antibody is available for research use only.



IHC staining of FFPE human spleen with CD43 antibody (clone SPN/3388). HIER: boil tissue sections in pH 9 10mM Tris with 1mM EDTA for 10-20 min and allow to cool before testing.



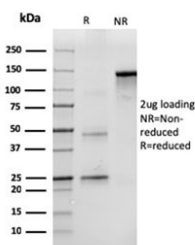
Flow cytometry testing of PFA-fixed human K562 cells with CD43 antibody (clone SPN/3388); Red=isotype control, Blue= CD43 antibody.



Immunofluorescence staining of PFA-fixed human K562 cells with CD43 antibody (green, clone SPN/3388) and NucSpot Live 650 (red).



Western blot testing of human K562 cell lysate with CD43 antibody (clone SPN/3388). Expected molecular weight: 45-135 kDa depending on glycosylation level.



SDS-PAGE analysis of purified, BSA-free CD43 antibody (clone SPN/3388) as confirmation of integrity and purity.

Description

It recognizes a cell surface glycoprotein of 95/115/135kDa (depending upon the extent of glycosylation), identified as CD43. 70-90% of T-cell lymphomas and from 22-37% of B-cell lymphomas express CD43. No reactivity has been observed with reactive B-cells. So a B-lineage population that co-expresses CD43 is highly likely to be a malignant lymphoma, especially a low-grade lymphoma, rather than a reactive B-cell population. When CD43 antibody is used in combination with anti-CD20, effective immunophenotyping of the lymphomas in formalin-fixed tissues can be obtained. Co-staining of a lymphoid infiltrate with anti-CD20 and anti-CD43 argues against a reactive process and favors a diagnosis of lymphoma.

Application Notes

Optimal dilution of the CD43 antibody should be determined by the researcher.

Immunogen

Recombinant full-length human SPN protein was used as the immunogen for the CD43 antibody.

Storage

Store the CD43 antibody at 2-8oC (with azide) or aliquot and store at -20oC or colder (without azide).