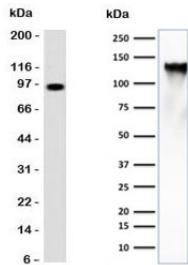


CD43 Antibody [clone CDLA43] (V7154)

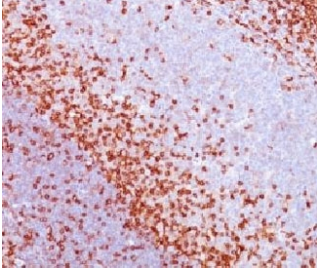
Catalog No.	Formulation	Size
V7154-100UG	0.2 mg/ml in 1X PBS with 0.1 mg/ml BSA (US sourced) and 0.05% sodium azide	100 ug
V7154-20UG	0.2 mg/ml in 1X PBS with 0.1 mg/ml BSA (US sourced) and 0.05% sodium azide	20 ug
V7154SAF-100UG	1 mg/ml in 1X PBS; BSA free, sodium azide free	100 ug
V7154IHC-7ML	Prediluted in 1X PBS with 0.1 mg/ml BSA (US sourced) and 0.05% sodium azide; *For IHC use only*	7 ml

Bulk quote request

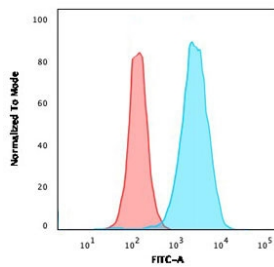
Availability	1-3 business days
Species Reactivity	Human
Format	Purified
Host	Mouse
Clonality	Monoclonal (mouse origin)
Isotype	Mouse IgG1, kappa
Clone Name	CDLA43
Purity	Protein G affinity chromatography
UniProt	P16150
Localization	Cell surface
Applications	Flow Cytometry : 1-2ug/million cells in 0.1ml Immunofluorescence : 1-2ug/ml Western Blot : 1-2ug/ml Immunohistochemistry (FFPE) : 1-2ug/ml for 30 min at RT (1) Prediluted IHC Only Format : incubate for 30 min at RT (2)
Limitations	This CD43 antibody is available for research use only.



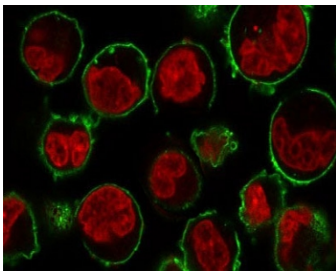
Western blot testing of human spleen lysate (left) and human K562 cell lysate (right) with CD43 antibody (clone CDLA43). Predicted molecular weight 45-135 kDa depending on glycosylation level.



IHC testing of FFPE human spleen with CD43 antibody (clone CDLA43)



Flow cytometry testing of human K562 cells with CD43 antibody (clone CDLA43); Red=isotype control, Blue= CD43 antibody.



Immunofluorescent staining of human K562 cells with CD43 antibody (clone CDLA43, green) and NucSpot nuclear stain (red).

Description

CD43 is one of the major glycoproteins of thymocytes and T lymphocytes. Plays a role in the physicochemical properties of the T-cell surface and in lectin binding. Presents carbohydrate ligands to selectins. Has an extended rodlike structure that could protrude above the glycocalyx of the cell and allow multiple glycan chains to be accessible for binding. Is a counter-receptor for SN/Siglec-1 (By similarity). During T-cell activation is actively removed from the T-cell-APC (antigen-presenting cell) contact site thus suggesting a negative regulatory role in adaptive immune response (By similarity).

[UniProt]

Application Notes

Titering of the CD43 antibody may be required for optimal performance.

1. FFPE testing requires sections to be boiled in pH 9 10mM Tris with 1mM EDTA for 10-20 minutes, followed by cooling at RT for 20 minutes, prior to staining.
2. The prediluted format is supplied in a dropper bottle and is optimized for use in IHC. After epitope retrieval step (if required), drip mAb solution onto the tissue section and incubate at RT for 30 min.

Immunogen

Recombinant full-length human protein was used as the immunogen for the CD43 antibody.

Storage

Store the CD43 antibody at 2-8oC (with azide) or aliquot and store at -20oC or colder (without azide).