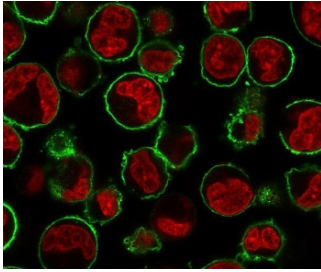


## CD43 Antibody [clone CDLA43-2] (V7572)

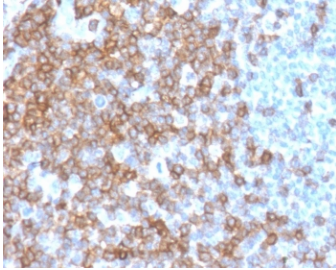
Catalog No.	Formulation	Size
V7572-100UG	0.2 mg/ml in 1X PBS with 0.1 mg/ml BSA (US sourced) and 0.05% sodium azide	100 ug
V7572-20UG	0.2 mg/ml in 1X PBS with 0.1 mg/ml BSA (US sourced) and 0.05% sodium azide	20 ug
V7572SAF-100UG	1 mg/ml in 1X PBS; BSA free, sodium azide free	100 ug
V7572IHC-7ML	Prediluted in 1X PBS with 0.1 mg/ml BSA (US sourced) and 0.05% sodium azide; *For IHC use only*	7 ml

### Bulk quote request

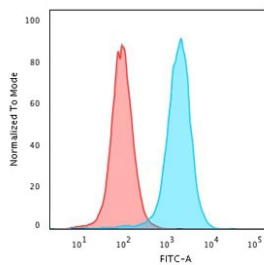
<b>Availability</b>	1-3 business days
<b>Species Reactivity</b>	Human
<b>Format</b>	Purified
<b>Host</b>	Mouse
<b>Clonality</b>	Monoclonal (mouse origin)
<b>Isotype</b>	Mouse IgG1, kappa
<b>Clone Name</b>	CDLA43-2
<b>Purity</b>	Protein G affinity chromatography
<b>UniProt</b>	P16150
<b>Localization</b>	Cell surface
<b>Applications</b>	Western Blot : 1-2ug/ml Flow Cytometry : 1-2ug/million cells Immunofluorescence : 1-2ug/ml Immunohistochemistry (FFPE) : 1-2ug/ml for 30 minutes at RT Prediluted IHC Only Format : incubate for 30 min at RT (1)
<b>Limitations</b>	This CD43 antibody is available for research use only.



Immunofluorescence staining of human K562 cells with CD43 antibody (green, clone CDLA43-2) and NucSpot Live 650 (red).



IHC staining of FFPE human spleen with CD43 antibody (clone CDLA43-2). HIER: boil tissue sections in pH 9 10mM Tris with 1mM EDTA for 10-20 min and allow to cool before testing.



Flow cytometry testing of PFA-fixed human K562 cells with CD43 antibody (clone CDLA43-2); Red=isotype control, Blue= CD43 antibody.



Western blot testing of human K562 cell lysate with CD43 antibody (clone CDLA43-2). Expected molecular weight: 45-135 kDa depending on glycosylation level.

## Description

CD43 is one of the major glycoproteins of thymocytes and T lymphocytes. Plays a role in the physicochemical properties of the T-cell surface and in lectin binding. Presents carbohydrate ligands to selectins. Has an extended rodlike structure that could protrude above the glycocalyx of the cell and allow multiple glycan chains to be accessible for binding. Is a counter-receptor for SN/Siglec-1 (By similarity). During T-cell activation is actively removed from the T-cell-APC (antigen-presenting cell) contact site thus suggesting a negative regulatory role in adaptive immune response (By similarity).

[UniProt]

## Application Notes

Optimal dilution of the CD43 antibody should be determined by the researcher.

## Immunogen

Recombinant full-length human SPN protein was used as the immunogen for the CD43 antibody.

## Storage

Store the CD43 antibody at 2-8oC (with azide) or aliquot and store at -20oC or colder (without azide).

