

CD43 Antibody [clone Bra7G] (V2873)

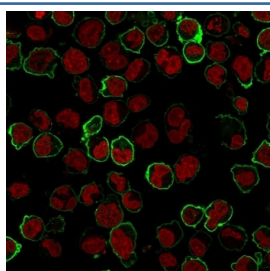
Catalog No.	Formulation	Size
V2873-100UG	0.2 mg/ml in 1X PBS with 0.1 mg/ml BSA (US sourced) and 0.05% sodium azide	100 ug
V2873-20UG	0.2 mg/ml in 1X PBS with 0.1 mg/ml BSA (US sourced) and 0.05% sodium azide	20 ug
V2873SAF-100UG	1 mg/ml in 1X PBS; BSA free, sodium azide free	100 ug
V2873IHC-7ML	Prediluted in 1X PBS with 0.1 mg/ml BSA (US sourced) and 0.05% sodium azide; *For IHC use only*	7 ml



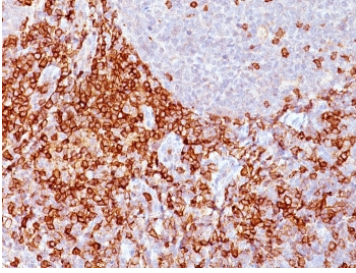
Citations (2)

[Bulk quote request](#)

Availability	1-3 business days
Species Reactivity	Human
Format	Purified
Host	Mouse
Clonality	Monoclonal (mouse origin)
Isotype	Mouse IgM, kappa
Clone Name	Bra7G
Purity	PEG precipitation
UniProt	P16150
Localization	Cell surface
Applications	Immunofluorescence : 1-2ug/ml Immunohistochemistry (FFPE) : 1-2ug/ml for 30 min at RT (1) (2)
Limitations	This CD43 antibody is available for research use only.



Immunofluorescence staining of human K562 cells with CD43 antibody (green, clone Bra7G) and NucSpot (red).



IHC: Formalin-fixed, paraffin-embedded human spleen stained with CD43 antibody (clone Bra7G).

Description

One of the major glycoproteins of thymocytes and T lymphocytes. Plays a role in the physicochemical properties of the T-cell surface and in lectin binding. Presents carbohydrate ligands to selectins. Has an extended rodlike structure that could protrude above the glycocalyx of the cell and allow multiple glycan chains to be accessible for binding. Is a counter-receptor for SN/Siglec-1 (By similarity). During T-cell activation is actively removed from the T-cell-APC (antigen-presenting cell) contact site thus suggesting a negative regulatory role in adaptive immune response (By similarity). [UniProt]

Application Notes

Optimal dilution of the CD43 antibody should be determined by the researcher.

1. For staining of formalin-fixed tissues, digest sections with Trypsin at 1mg/ml PBS, 15 min at room temp
2. The prediluted format is supplied in a dropper bottle and is optimized for use in IHC. After epitope retrieval step (if required), drip mAb solution onto the tissue section and incubate at RT for 30 min.

Immunogen

Immature pluripotent human leukemia K562 cells were used as the immunogen for the CD43 antibody.

Storage

Store the CD43 antibody at 2-8°C (with azide) or aliquot and store at -20°C or colder (without azide).