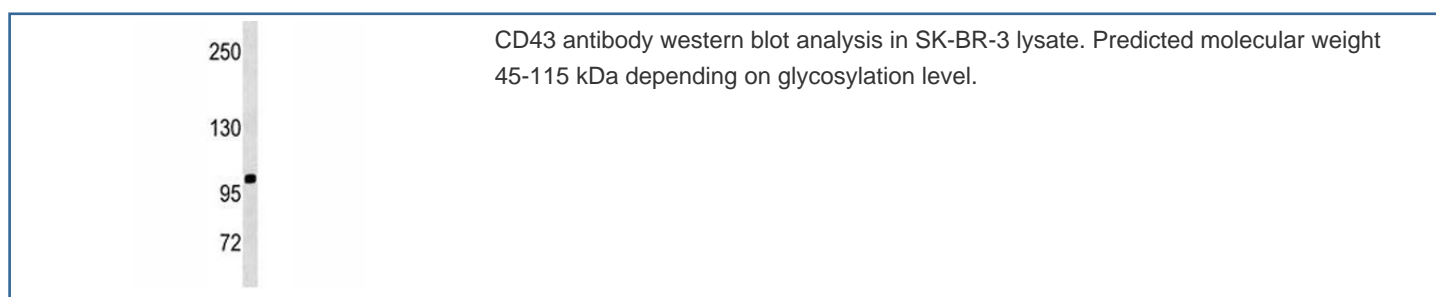


CD43 Antibody [clone 423CT7.9.2] (F40339)

Catalog No.	Formulation	Size
F40339-0.4ML	In 1X PBS, pH 7.4, with 0.09% sodium azide	0.4 ml
F40339-0.08ML	In 1X PBS, pH 7.4, with 0.09% sodium azide	0.08 ml

[Bulk quote request](#)

Availability	1-3 business days
Species Reactivity	Human
Format	Purified
Host	Mouse
Clonality	Monoclonal (mouse origin)
Isotype	Mouse IgM
Clone Name	423CT7.9.2
Purity	Purified
UniProt	P16150
Applications	Western Blot : 1:100-1:250
Limitations	This CD43 antibody is available for research use only.



Description

One of the major glycoproteins of thymocytes and T lymphocytes. Plays a role in the physicochemical properties of the T-cell surface and in lectin binding. Presents carbohydrate ligands to selectins. Has an extended rodlike structure that could protrude above the glycocalyx of the cell and allow multiple glycan chains to be accessible for binding. Is a counter-receptor for SN/Siglec-1. During T-cell activation is actively removed from the T-cell-APC (antigen-presenting cell) contact site thus suggesting a negative regulatory role in adaptive immune response (By similarity) [UniProt]

Application Notes

Titration of the CD43 antibody may be required due to differences in protocols and secondary/substrate sensitivity.

Immunogen

A portion of amino acids 230-257 from the human protein was used as the immunogen for this CD43 antibody.

Storage

Aliquot the CD43 antibody and store frozen at -20oC or colder. Avoid repeated freeze-thaw cycles.