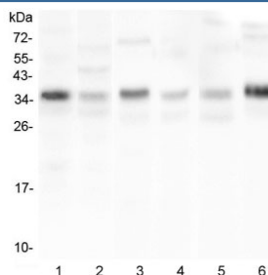


CD40L Antibody / TRAP / CD154 (RQ4900)

Catalog No.	Formulation	Size
RQ4900	0.5mg/ml if reconstituted with 0.2ml sterile DI water	100 ug

[Bulk quote request](#)

Availability	1-3 business days
Species Reactivity	Human, Mouse, Rat
Format	Antigen affinity purified
Host	Rabbit
Clonality	Polyclonal (rabbit origin)
Isotype	Rabbit IgG
Purity	Antigen affinity purified
Buffer	Lyophilized from 1X PBS with 2% Trehalose and 0.025% sodium azide
UniProt	P29965
Applications	Western Blot : 0.5-1ug/ml
Limitations	This CD40L antibody is available for research use only.



Western blot testing of 1) human HL-60, 2) human U-87 MG, 3) rat liver, 4) rat stomach, 5) mouse spleen and 6) mouse thymus lysate with CD40L antibody at 0.5ug/ml. Expected molecular weight: 29-39 kDa (depending on glycosylation level) or ~18 kDa (soluble form).

Description

CD40 ligand (CD40L) is a type II membrane protein of 261 amino acids on activated T cells that induces B cell proliferation and immunoglobulin secretion. It has homology with tumour necrosis factor-alpha and -beta, and has important functions in B-cell activation and differentiation. Human CD40L with 5 exons, is mapped to the proximal region of the mouse X chromosome on Xq26.3-27.1, and can be detected on T cells but is absent from B cells and monocytes. Since CD40L is expressed on platelets and released from them on activation, its predictive value as a marker for clinical outcome and the therapeutic effect of inhibition of glycoprotein IIb /IIIa receptor in patients with acute coronary syndromes was investigated. The soluble CD40L may be involved in the process of restenosis and that it exerts its effect by

triggering a complex group of inflammatory reactions on endothelial and mononuclear cells. CD40L plays a central role in the pathophysiology of acute coronary syndromes, and has a role in the pathogenesis of coronary artery lesions.

Application Notes

Optimal dilution of the CD40L antibody should be determined by the researcher.

Immunogen

Amino acids KEETKKENSFEMQKGDQNPQIAAHVISEA from the human protein were used as the immunogen for the CD40L antibody.

Storage

After reconstitution, the CD40L antibody can be stored for up to one month at 4°C. For long-term, aliquot and store at -20°C. Avoid repeated freezing and thawing.