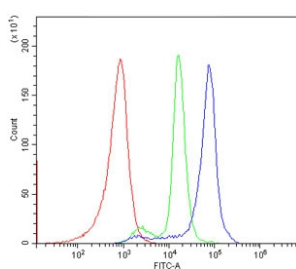


CD40 Antibody (R32519)

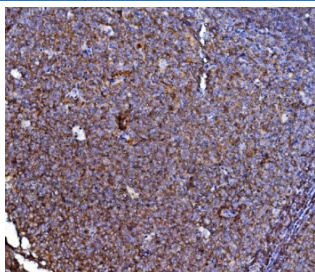
Catalog No.	Formulation	Size
R32519	0.5mg/ml if reconstituted with 0.2ml sterile DI water	100 ug

Bulk quote request

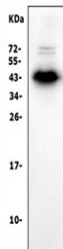
Availability	1-3 business days
Species Reactivity	Human
Format	Antigen affinity purified
Host	Rabbit
Clonality	Polyclonal (rabbit origin)
Isotype	Rabbit IgG
Purity	Antigen affinity
Buffer	Lyophilized from 1X PBS with 2% Trehalose and 0.025% sodium azide
UniProt	P25942
Localization	Cytoplasmic, cell membrane
Applications	Western Blot : 0.5-1ug/ml Immunohistochemistry (FFPE) : 2-5ug/ml Flow Cytometry : 1-3ug/million cells ELISA : 0.5-1ug/ml (human protein tested); request BSA-free format for coating
Limitations	This CD40 antibody is available for research use only.



Flow cytometry testing of human PBM cells with CD40 antibody at 1ug/million cells (blocked with goat sera); Red=cells alone, Green=isotype control, Blue= CD40 antibody.



IHC staining of FFPE human tonsil tissue with CD40 antibody. HIER: boil tissue sections in pH8 EDTA for 20 min and allow to cool before testing.



Western blot testing of human Raji lysate with CD40 antibody at 0.5ug/ml. Predicted molecular weight is 30-45 kDa depending on glycosylation level.

Description

CD40 is a cell surface receptor that is expressed on the surface of all mature B cells and also expressed on monocytes, dendritic cells, and thymic epithelium. It is a member of the tumor necrosis factor (TNF) receptor superfamily and is the receptor for CD40 ligand. CD40 ligand (CD40L, CD154, gp39, and TRAM) belongs to the TNF gene family and is expressed more widely than CD40 predominantly on activated CD4+ T cells. Activation of CD40 has also been shown to inhibit the growth of certain B cell lymphomas and to induce the death of transformed cells of mesenchymal or epithelial origin.

Application Notes

Differences in protocols and secondary/substrate sensitivity may require the CD40 antibody to be titrated for optimal performance.

Immunogen

Amino acids E21-R193 from the human protein were used as the immunogen for the CD40 antibody.

Storage

After reconstitution, the CD40 antibody can be stored for up to one month at 4°C. For long-term, aliquot and store at -20°C. Avoid repeated freezing and thawing.