

## CD4 Antibody [clone CD4/3026] (V7602)

Catalog No.	Formulation	Size
V7602-100UG	0.2 mg/ml in 1X PBS with 0.1 mg/ml BSA (US sourced) and 0.05% sodium azide	100 ug
V7602-20UG	0.2 mg/ml in 1X PBS with 0.1 mg/ml BSA (US sourced) and 0.05% sodium azide	20 ug
V7602SAF-100UG	1 mg/ml in 1X PBS; BSA free, sodium azide free	100 ug

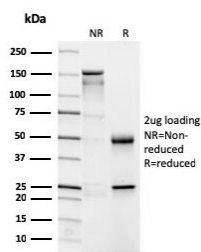
[Bulk quote request](#)

<b>Availability</b>	1-3 business days
<b>Species Reactivity</b>	Human
<b>Format</b>	Purified
<b>Clonality</b>	Monoclonal (mouse origin)
<b>Isotype</b>	Mouse IgG2b, kappa
<b>Clone Name</b>	CD4/3026
<b>Purity</b>	Protein G affinity chromatography
<b>UniProt</b>	P01730
<b>Applications</b>	ELISA (order BSA-free Format For Coating) :
<b>Limitations</b>	This CD4 antibody is available for research use only.

Human Protein Microarray Specificity Validation



Analysis of HuProt(TM) microarray containing more than 19,000 full-length human proteins using CD4 antibody (clone CD4/3026). These results demonstrate the foremost specificity of the CD4/3026 mAb. Z- and S- score: The Z-score represents the strength of a signal that an antibody (in combination with a fluorescently-tagged anti-IgG secondary Ab) produces when binding to a particular protein on the HuProt(TM) array. Z-scores are described in units of standard deviations (SD's) above the mean value of all signals generated on that array. If the targets on the HuProt(TM) are arranged in descending order of the Z-score, the S-score is the difference (also in units of SD's) between the Z-scores. The S-score therefore represents the relative target specificity of an Ab to its intended target.



SDS-PAGE analysis of purified, BSA-free CD4 antibody (clone CD4/3026) as confirmation of integrity and purity.

## Description

Recognizes a protein of 55kDa, identified as CD4. It is a membrane glycoprotein of T lymphocytes that interacts with major histocompatibility complex class II antigens and is also a receptor for the human immunodeficiency virus. This protein is expressed not only in T lymphocytes, but also in B cells, macrophages, and granulocytes. It is also expressed in specific regions of the brain. The protein functions to initiate or augment the early phase of T-cell activation, and may function as an important mediator of indirect neuronal damage in infectious and immune-mediated diseases of the central nervous system. The majority of peripheral T-cell lymphomas are derived from the T-helper/regulatory cell subset so that most mature T-cell neoplasms are CD4+/CD8-. Anti-CD4 is used in the immunohistochemical staining of lymphoproliferative disorders to evaluate tumors with CD4 aberrant expression.

## Application Notes

Optimal dilution of the CD4 antibody should be determined by the researcher.

## Immunogen

A recombinant human partial protein (amino acids 245-392) was used as the immunogen for the CD4 antibody.

## Storage

Store the CD4 antibody at 2-8oC (with azide) or aliquot and store at -20oC or colder (without azide).