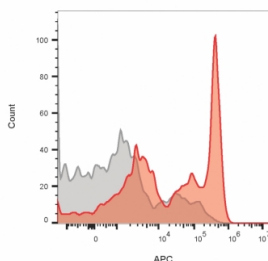


CD4 Antibody for FACS / Immune Cell Phenotyping Antibody [clone CD4/1604] (V9139)

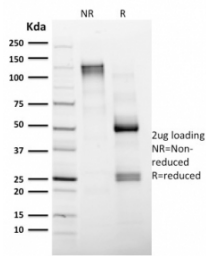
Catalog No.	Formulation	Size
V9139-100UG	0.2 mg/ml in 1X PBS with 0.1 mg/ml BSA (US sourced), 0.05% sodium azide	100 ug
V9139-20UG	0.2 mg/ml in 1X PBS with 0.1 mg/ml BSA (US sourced), 0.05% sodium azide	20 ug
V9139SAF-100UG	1 mg/ml in 1X PBS; BSA free, sodium azide free	100 ug

Bulk quote request

Availability	1-3 business days
Species Reactivity	Human
Format	Purified
Host	Mouse
Clonality	Monoclonal (mouse origin)
Isotype	Mouse IgG2b, kappa
Clone Name	CD4/1604
Purity	Protein A/G affinity
UniProt	P01730
Localization	Cell Surface
Applications	ELISA (order BSA-free Format For Coating) : Flow Cytometry : 1-2ug/million cells
Limitations	This CD4 antibody is available for research use only.



CD4 Antibody for FACS. Flow cytometry analysis of CD4 antibody staining in human peripheral blood mononuclear cells (PBMCs) supporting immune cell phenotyping using a mouse monoclonal antibody against CD4. Lymphocyte-gated cells show a well-defined CD4-positive population (red, clone CD4/1604) compared to the isotype control (gray), enabling accurate identification and characterization of CD4-expressing immune cell populations for flow cytometry-based phenotyping and multiparametric immune profiling.



SDS-PAGE analysis of purified, BSA-free CD4 Antibody for FACS / Immune Cell Phenotyping Antibody (clone CD4/1604) as confirmation of integrity and purity.

Description

CD4 molecule (CD4) is a cell surface glycoprotein expressed on a subset of immune cells including T helper lymphocytes, monocytes, macrophages, and dendritic cells, where it plays a role in antigen recognition and immune signaling. CD4 Antibody for FACS is extensively used in flow cytometry for immune cell phenotyping, enabling identification and characterization of CD4-expressing populations within complex cellular mixtures.

CD4 antibody, also known as CD4 immune marker antibody or T helper cell receptor antibody, is a key component of flow cytometry-based immune profiling strategies. CD4 Antibody for FACS enables comprehensive phenotyping of leukocyte populations by distinguishing CD4-positive cells from other immune subsets. In multiparameter flow cytometry panels, CD4 is frequently combined with lineage and activation markers to define immune cell identity and functional state, supporting high-dimensional analysis of immune systems.

This CD4 Antibody for FACS (clone CD4/1604) is particularly suited for broad immune phenotyping applications where characterization of multiple immune populations is required. Flow cytometry using CD4 antibodies allows researchers to assess immune composition, track changes in CD4-positive cell frequency, and investigate immune responses across physiological and pathological conditions. CD4 Antibody for FACS supports the development of detailed phenotypic profiles that are essential for immunology research and translational studies.

CD4 is localized to the plasma membrane and functions in conjunction with the T cell receptor complex to facilitate antigen-specific signaling. Its expression across multiple immune cell types makes it a valuable marker for comprehensive immune profiling. In flow cytometry assays, CD4 Antibody for FACS provides clear and consistent surface staining, enabling accurate identification of CD4-positive cells across diverse leukocyte populations.

A mouse monoclonal CD4 antibody such as clone CD4/1604 can be used in flow cytometry to support immune phenotyping studies. This antibody targets CD4 in research applications, enabling detection and characterization of immune cell subsets in flow cytometry-based assays.

A full range of CD4 antibody reagents for immunohistochemistry, western blot, and flow cytometry is available on our [CD4 Antibody](#) collection page.

Application Notes

Optimal dilution of the CD4 Antibody for FACS / Immune Cell Phenotyping Antibody should be determined by the researcher.

Immunogen

A portion of amino acids 245-392 was used as the immunogen for the CD4 Antibody for FACS / Immune Cell Phenotyping Antibody.

Storage

Aliquot the CD4 antibody and store frozen at -20oC or colder. Avoid repeated freeze-thaw cycles.

Alternate Names

CD4 phenotyping antibody, CD4 immune profiling antibody, CD4 flow cytometry antibody, CD4 leukocyte marker antibody