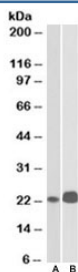


CD3e Antibody (R35652)

Catalog No.	Formulation	Size
R35652-100UG	0.5 mg/ml in 1X TBS, pH7.3, with 0.5% BSA (US sourced) and 0.02% sodium azide	100 ug

[Bulk quote request](#)

Availability	1-3 business days
Species Reactivity	Human
Predicted Reactivity	Pig, Rat
Format	Antigen affinity purified
Host	Goat
Clonality	Polyclonal (goat origin)
Isotype	Goat Ig
Purity	Antigen affinity
Gene ID	916
Applications	Western Blot : 0.1-0.3ug/ml ELISA (peptide) LOD : 1:128000
Limitations	This CD3e antibody is available for research use only.



Western blot testing of Jurkat [A] and Molt4 [B] lysates with CD3e antibody at 0.1ug/ml. Expected/observed molecular weight ~23kDa.

Description

Additional name(s) for this target protein: CD3 epsilon

Application Notes

Optimal dilution of the CD3e antibody should be determined by the researcher.

Immunogen

Amino acids RKGQRDLYSGLNQR were used as the immunogen for this CD3e antibody. The amino acid sequence used as immunogen is from the cytoplasmic portion of the protein.

Storage

Aliquot and store the CD3e antibody at -20oC.