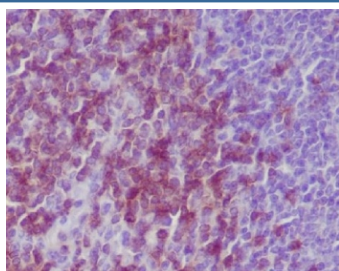


CD3e Antibody [clone COB-3] (RQ5184)

Catalog No.	Formulation	Size
RQ5184	Antibody in PBS with 0.02% sodium azide, 50% glycerol and 0.4-0.5mg/ml BSA	100 ul

[Bulk quote request](#)

Availability	1-2 weeks
Species Reactivity	Mouse
Format	Purified
Clonality	Rabbit Monoclonal
Isotype	Rabbit IgG
Clone Name	COB-3
Purity	Affinity purified
UniProt	P07766
Applications	Immunohistochemistry (FFPE) : 1:50-1:200
Limitations	This CD3e antibody is available for research use only.



IHC staining of FFPE mouse spleen tissue with CD3e antibody. HIER: boil tissue sections in pH6, 10mM citrate buffer, for 10-20 min and allow to cool before testing.

Description

The protein encoded by this gene is the CD3-epsilon polypeptide, which together with CD3-gamma, -delta and -zeta, and the T-cell receptor alpha/beta and gamma/delta heterodimers, forms the T-cell receptor-CD3 complex. This complex plays an important role in coupling antigen recognition to several intracellular signal-transduction pathways. The genes encoding the epsilon, gamma and delta polypeptides are located in the same cluster on chromosome 11. The epsilon polypeptide plays an essential role in T-cell development. Defects in this gene cause immunodeficiency. This gene has also been linked to a susceptibility to type I diabetes in women. [RefSeq]

Application Notes

Optimal dilution of the CD3e antibody should be determined by the researcher.

Immunogen

A synthetic peptide specific to mouse CD3 epsilon / CD3E was used as the immunogen for the CD3e antibody.

Storage

Store the CD3e antibody at -20oC.