

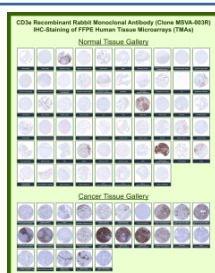
CD3E Antibody / CD3 epsilon subunit [clone MSVA-003R] (V6139)

Catalog No.	Formulation	Size
V6139-100UG	Antibody in 1X PBS with 0.05% BSA, 0.05% sodium azide	100 ug
V6139-20UG	Antibody in 1X PBS with 0.05% BSA, 0.05% sodium azide	20 ug

Recombinant **RABBIT MONOCLONAL**

[Bulk quote request](#)

Species Reactivity	Human
Format	Purified
Host	Rabbit
Clonality	Recombinant Rabbit Monoclonal
Isotype	Rabbit IgG, kappa
Clone Name	MSVA-003R
UniProt	P07766
Localization	Cell membrane
Applications	Immunohistochemistry (FFPE) : 1-2ug/ml
Limitations	This CD3E/CD3 epsilon subunit antibody is available for research use only.



T-cell surface glycoprotein CD3 epsilon chain Rabbit Recombinant Monoclonal Antibody (MSVA-003R) tested on many normal and cancer tissues. The immunohistochemistry staining in these tissues aligns with the expression data in Human Protein Atlas.

Manual Protocol: Freshly cut sections should be used (less than 10 days between cutting and staining). Heat-induced antigen retrieval for 5 minutes in an autoclave at 121°C in pH 7.8 Target Retrieval Solution buffer. Apply the antibody at a dilution of 1:150 at 37°C for 60 minutes. Visualization of bound antibody by the EnVision Kit (Dako, Agilent) according to the manufacturer's directions.

Application Notes

- Optimal dilution of the CD3E/CD3 epsilon subunit antibody should be determined by the researcher.
- This CD3E/CD3 epsilon subunit antibody is recombinantly produced by expression in human HEK293 cells.

Immunogen

Synthetic peptide from human CD3e protein (around amino acids 20-40) (exact sequence is proprietary) was used as the immuongen for the CD3E/CD3 epsilon subunit antibody.

Storage

CD3E/CD3 epsilon subunit antibody with sodium azide - store at 2 to 8oC; antibody without sodium azide - store at -20 to -80oC.