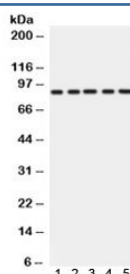


CD36 Antibody (R31985)

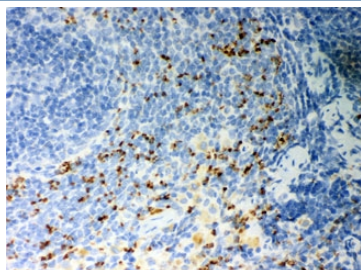
Catalog No.	Formulation	Size
R31985	0.5mg/ml if reconstituted with 0.2ml sterile DI water	100 ug

Bulk quote request

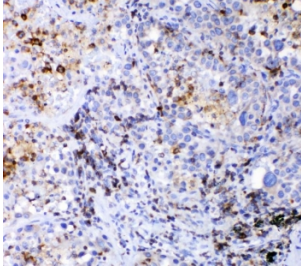
Availability	1-3 business days
Species Reactivity	Human, Mouse, Rat
Format	Antigen affinity purified
Host	Rabbit
Clonality	Polyclonal (rabbit origin)
Isotype	Rabbit IgG
Purity	Antigen affinity
Buffer	Lyophilized from 1X PBS with 2.5% BSA and 0.025% sodium azide
UniProt	P16671
Localization	Cell membrane
Applications	Western Blot : 0.1-0.5ug/ml Immunohistochemistry (FFPE) : 0.5-1ug/ml
Limitations	This CD36 antibody is available for research use only.



Western blot testing of 1) rat liver, 2) rat heart, 3) mouse liver, 4) mouse heart and 5) human SMCC lysate with CD36 antibody. Expected molecular weight: ~53/88 kDa (unmodified/glycosylated).



IHC staining of FFPE rat spleen tissue with CD36 antibody. HIER: Boil the paraffin sections in pH 6, 10mM citrate buffer for 20 minutes and allow to cool prior to staining.



IHC staining of FFPE human lung cancer tissue with CD36 antibody. HIER: Boil the paraffin sections in pH 6, 10mM citrate buffer for 20 minutes and allow to cool prior to staining.

Description

CD36 (cluster of differentiation 36), also known as FAT (fatty acid translocase), FAT/CD36, SCARB3, GP88, glycoprotein IV (gpIV), and glycoprotein IIIb (gpIIIb), is an integral membrane protein found on the surface of many cell types in vertebrate animals. It is a member of the class B scavenger receptor family of cell surface proteins. It is mapped to 7q21.11. And CD36 binds many ligands including collagen, thrombospondin, erythrocytes parasitized with *Plasmodium falciparum*, oxidized low density lipoprotein, native lipoproteins, oxidized phospholipids, and long-chain fatty acids. In addition, CD36 function in long-chain fatty acid uptake and signaling can be irreversibly inhibited by sulfo-N-succinimidyl oleate (SSO), which binds lysine 164 within a hydrophobic pocket shared by several CD36 ligands, e.g. fatty acid and oxLDL.

Application Notes

Optimal dilution of the CD36 antibody should be determined by the researcher.

Immunogen

Amino acids DLLIQKTIKKQVVLEEGTIAFKNWVKTGTEVYRQFW of human CD36 were used as the immunogen for the CD36 antibody.

Storage

After reconstitution, the CD36 antibody can be stored for up to one month at 4°C. For long-term, aliquot and store at -20°C. Avoid repeated freezing and thawing.