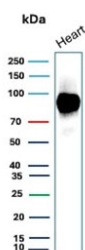


## CD36 Antibody [clone CD36/7218] (V5204)

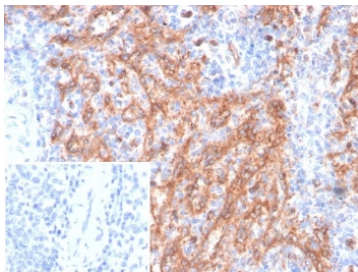
Catalog No.	Formulation	Size
V5204-100UG	0.2 mg/ml in 1X PBS with 0.1 mg/ml BSA (US sourced), 0.05% sodium azide	100 ug
V5204-20UG	0.2 mg/ml in 1X PBS with 0.1 mg/ml BSA (US sourced), 0.05% sodium azide	20 ug
V5204SAF-100UG	1 mg/ml in 1X PBS; BSA free, sodium azide free	100 ug

[Bulk quote request](#)

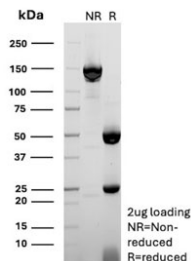
<b>Availability</b>	1-3 business days
<b>Species Reactivity</b>	Human
<b>Format</b>	Purified
<b>Host</b>	Mouse
<b>Clonality</b>	Monoclonal (mouse origin)
<b>Isotype</b>	Mouse IgG
<b>Clone Name</b>	CD36/7218
<b>Purity</b>	Protein A/G affinity
<b>UniProt</b>	P16671
<b>Localization</b>	Cell surface
<b>Applications</b>	Immunohistochemistry (FFPE) : 1-2ug/ml for 30 min at RT Western Blot : 2-4ug/ml
<b>Limitations</b>	This CD36 antibody is available for research use only.



Western blot testing of human heart tissue lysate with CD36 antibody (clone CD36/7218). Expected molecular weight: 53-88 kDa depending on level of glycosylation.



IHC staining of FFPE human spleen tissue with CD36 antibody (clone CD36/7218) at 2ug/ml. Inset: PBS used in place of primary Ab (secondary Ab negative control). HIER: boil tissue sections in pH 9 10mM Tris with 1mM EDTA for 20 min and allow to cool before testing.



SDS-PAGE analysis of purified, BSA-free CD36 antibody (clone CD36/7218) as confirmation of integrity and purity.

## Description

Recognizes a protein of 80kDa-90kDa, identified as CD36. It is expressed on platelets, monocytes and macrophages, microvascular endothelial cells, erythrocyte precursors, mammary epithelial cells, and some macrophage derived dendritic cells. CD36 acts as a receptor for thrombospondin (TSP), collagen types I, IV and V, *P. falciparum* malaria-infected erythrocytes, and sickle erythrocytes. It also functions as a scavenger receptor, mediating macrophage uptake of oxidized low-density lipoprotein (LDL) and recognition of apoptotic polymorphonuclear leukocytes (PMN). CD36 plays a role in platelet aggregation, macrophage foam cell development, inflammation, and the tissue ischemia observed in sickle cell disease and cerebral malaria. Note that 1-4% of Japanese and East Asia population lack CD36.

## Application Notes

Optimal dilution of the CD36 antibody should be determined by the researcher.

## Immunogen

Recombinant full-length human CD36 protein was used as the immunogen for the CD36 antibody.

## Storage

Aliquot the CD36 antibody and store frozen at -20oC or colder. Avoid repeated freeze-thaw cycles.