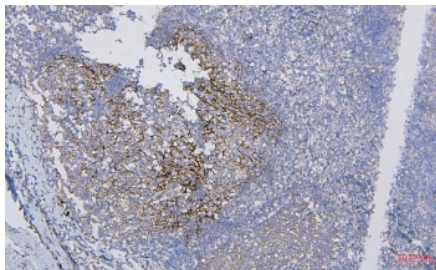


CD35 Antibody (RQ5583)

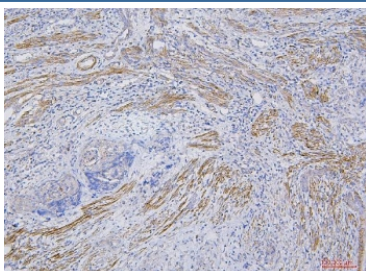
Catalog No.	Formulation	Size
RQ5583	0.5mg/ml if reconstituted with 0.2ml sterile DI water	100 ug

[Bulk quote request](#)

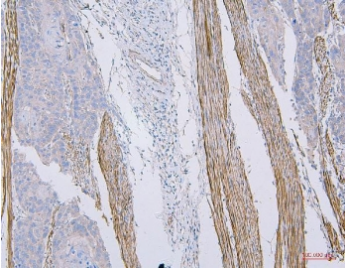
Availability	1-3 business days
Species Reactivity	Human
Format	Antigen affinity purified
Host	Rabbit
Clonality	Polyclonal (rabbit origin)
Isotype	Rabbit IgG
Purity	Affinity purified
Buffer	Lyophilized from 1X PBS with 2% Trehalose and 0.025% sodium azide
UniProt	P17927
Applications	Western Blot : 0.25-0.5ug/ml Immunohistochemistry (FFPE) : 2-5ug/ml Direct ELISA : 0.1-0.5ug/ml
Limitations	This CD35 antibody is available for research use only.



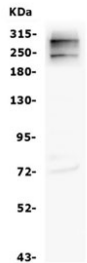
CD35 Antibody Human Tonsil Tissue Immunohistochemistry. IHC staining of FFPE human tonsil with CD35 antibody. HIER: boil tissue sections in pH8 EDTA for 20 min and allow to cool before testing.



CD35 Antibody Endometrial Carcinoma IHC. Immunohistochemistry staining of FFPE human endometrial carcinoma tissue with CD35 antibody. HIER: boil tissue sections in pH8 EDTA for 20 min and allow to cool before testing.



CD35 Antibody Esophagus Squama Cancer IHC. Immunohistochemistry staining of FFPE human esophagus squama cancer tissue with CD35 antibody. HIER: boil tissue sections in pH8 EDTA for 20 min and allow to cool before testing.



CD35 Antibody HL60 WB. Western blot testing of human HL-60 cell lysate with CD35 antibody. Expected molecular weight: 220-300 kDa.



CD35 Antibody TF-1 WB. Western blot testing of human TF-1 cell lysate samples with CD35 antibody. Expected molecular weight: 220-300 kDa.

Description

Complement receptor type 1 (CR1) also known as C3b/C4b receptor or CD35 (cluster of differentiation 35) is a protein that in humans is encoded by the CR1 gene. This gene is a member of the receptors of complement activation (RCA) family and is located in the 'cluster RCA' region of chromosome 1. The gene encodes a monomeric single-pass type I membrane glycoprotein found on erythrocytes, leukocytes, glomerular podocytes, and splenic follicular dendritic cells. The Knops blood group system is a system of antigens located on this protein. The protein mediates cellular binding to particles and immune complexes that have activated complement. Decreases in expression of this protein and/or mutations in its gene have been associated with gallbladder carcinomas, mesangiocapillary glomerulonephritis, systemic lupus erythematosus and sarcoidosis. Mutations in this gene have also been associated with a reduction in Plasmodium falciparum rosetting, conferring protection against severe malaria. Alternate allele-specific splice variants, encoding different isoforms, have been characterized. Additional allele specific isoforms, including a secreted form, have been described but have not been fully characterized.

For a validated reference of CD35 expression highlighting follicular dendritic cell networks in lymphoid tissue, see [CD35 antibody clone CR1/6378](#) with supporting immunohistochemistry data.

Application Notes

Optimal dilution of the CD35 antibody should be determined by the researcher.

Immunogen

A human recombinant protein (amino acids D109-Q957) was used as the immunogen for the CD35 antibody.

Storage

After reconstitution, the CD35 antibody can be stored for up to one month at 4°C. For long-term, aliquot and store at

-20oC. Avoid repeated freezing and thawing.