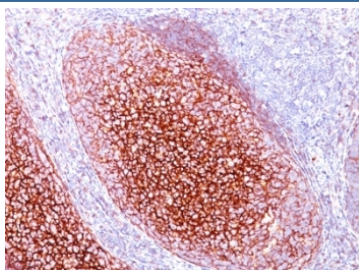


## CD35 Antibody [clone CR1/802] (V2469)

Catalog No.	Formulation	Size
V2469-100UG	0.2 mg/ml in 1X PBS with 0.1 mg/ml BSA (US sourced) and 0.05% sodium azide	100 ug
V2469-20UG	0.2 mg/ml in 1X PBS with 0.1 mg/ml BSA (US sourced) and 0.05% sodium azide	20 ug
V2469SAF-100UG	1 mg/ml in 1X PBS; BSA free, sodium azide free	100 ug
V2469IHC-7ML	Prediluted in 1X PBS with 0.1 mg/ml BSA (US sourced) and 0.05% sodium azide; *For IHC use only*	7 ml

[Bulk quote request](#)

<b>Availability</b>	1-3 business days
<b>Species Reactivity</b>	Human
<b>Format</b>	Purified
<b>Host</b>	Mouse
<b>Clonality</b>	Monoclonal (mouse origin)
<b>Isotype</b>	Mouse IgG1, kappa
<b>Clone Name</b>	CR1/802
<b>Purity</b>	Protein G affinity chromatography
<b>UniProt</b>	P17927
<b>Localization</b>	Cell surface
<b>Applications</b>	Flow Cytometry : 0.5-1ug/10 <sup>6</sup> cells Immunofluorescence : 1-2ug/ml Immunohistochemistry (FFPE) : 0.5-1ug/ml for 30 min at RT
<b>Limitations</b>	This CD35 antibody is available for research use only.



IHC: Formalin-fixed, paraffin-embedded human tonsil stained with CD35 antibody (CR1/802).

## Description

Recognizes a protein of 210-220kDa, which is identified as the complement receptor 1 (CR1)/CD35. This mAb does not block CR1 activity. It is highly specific to CR1 and shows no cross-reaction with CR2. The primary function of CR1 is to serve as the cellular receptor for C3b and C4b, the most important components of the complement system leading to clearance of foreign macromolecules. The Knops blood group system is a system of antigens located on this protein. Follicular dendritic cells (FDC) are restricted to the B-cell regions of secondary lymphoid follicles. They are CD21+/CD35+/CD1a-. This mAb labels follicular dendritic cells and follicular dendritic cell sarcoma.

## Application Notes

Optimal dilution of the CD35 antibody should be determined by the researcher.

1. Staining of formalin-fixed tissues requires boiling tissue sections in 10mM Citrate buffer, pH 6.0, for 10-20 min followed by cooling at RT for 20 min
2. The prediluted format is supplied in a dropper bottle and is optimized for use in IHC. After epitope retrieval step (if required), drip mAb solution onto the tissue section and incubate at RT for 30 min.

## Immunogen

Recombinant human protein was used as the immunogen for the CD35 antibody.

## Storage

Store the CD35 antibody at 2-8oC (with azide) or aliquot and store at -20oC or colder (without azide).