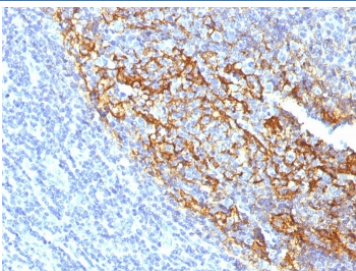


## CD35 Antibody / CR1 [clone To5] (V7691)

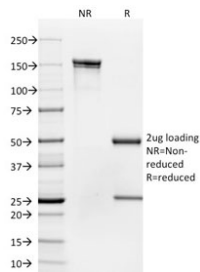
Catalog No.	Formulation	Size
V7691-100UG	0.2 mg/ml in 1X PBS with 0.1 mg/ml BSA (US sourced) and 0.05% sodium azide	100 ug
V7691-20UG	0.2 mg/ml in 1X PBS with 0.1 mg/ml BSA (US sourced) and 0.05% sodium azide	20 ug
V7691SAF-100UG	1 mg/ml in 1X PBS; BSA free, sodium azide free	100 ug

### Bulk quote request

<b>Availability</b>	1-3 business days
<b>Species Reactivity</b>	Human
<b>Format</b>	Purified
<b>Host</b>	Mouse
<b>Clonality</b>	Monoclonal (mouse origin)
<b>Isotype</b>	Mouse IgG1, kappa
<b>Clone Name</b>	To5
<b>Purity</b>	Protein G affinity chromatography
<b>UniProt</b>	P17927
<b>Localization</b>	Cell surface
<b>Applications</b>	Flow Cytometry : 1-2ug/10 <sup>6</sup> cells Immunofluorescence : 1-2ug/ml Immunohistochemistry (FFPE) : 1-2ug/ml
<b>Limitations</b>	This CD35 antibody is available for research use only.



CD35 Antibody Tonsil IHC Clone To5. Immunohistochemistry staining of FFPE human tonsil with CD35 antibody (clone To5). HIER: boil tissue sections in pH 9 10mM Tris with 1mM EDTA for 10-20 min and allow to cool before testing.



SDS-PAGE analysis of purified, BSA-free CD35 antibody (clone To5) as confirmation of integrity and purity.

## Description

Recognizes a protein of 210-220kDa, which is identified as the complement receptor 1 (CR1)/CD35. This MAb does not block CR1 activity. It is highly specific to CR1 and shows no cross-reaction with CR2. The primary function of CR1 is to serve as the cellular receptor for C3b and C4b, the most important components of the complement system leading to clearance of foreign macromolecules. The Knops blood group system is a system of antigens located on this protein. Follicular dendritic cells (FDC) are restricted to the B-cell regions of secondary lymphoid follicles. They are CD21+/CD35+/CD1a-. This MAb labels follicular dendritic cells and follicular dendritic cell sarcoma.

For a validated reference of CD35 expression highlighting follicular dendritic cell networks in lymphoid tissue, see [CD35 antibody clone CR1/6378](#) with supporting immunohistochemistry data.

## Application Notes

Optimal dilution of the CD35 antibody should be determined by the researcher.

## Immunogen

Follicular dendritic cells (FDC) from the tonsil were used as the immunogen for the CD35 antibody.

## Storage

Store the CD35 antibody at 2-8°C (with azide) or aliquot and store at -20°C or colder (without azide).