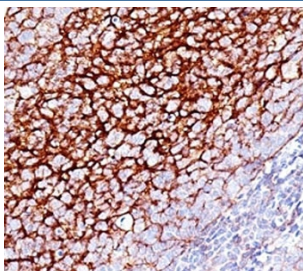


CD35 Antibody (Complement Receptor 1) [clone SPM554] (V9010)

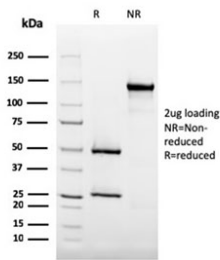
Catalog No.	Formulation	Size
V9010-100UG	0.2 mg/ml in 1X PBS with 0.1 mg/ml BSA (US sourced) and 0.05% sodium azide	100 ug
V9010-20UG	0.2 mg/ml in 1X PBS with 0.1 mg/ml BSA (US sourced) and 0.05% sodium azide	20 ug
V9010SAF-100UG	1 mg/ml in 1X PBS; BSA free, sodium azide free	100 ug
V9010IHC-7ML	Prediluted in 1X PBS with 0.1 mg/ml BSA (US sourced) and 0.05% sodium azide; *For IHC use only*	7 ml

[Bulk quote request](#)

Availability	1-3 business days
Species Reactivity	Human
Format	Purified
Host	Mouse
Clonality	Monoclonal (mouse origin)
Isotype	Mouse IgG1, kappa
Clone Name	SPM554
Purity	Protein G affinity chromatography
UniProt	P17927
Localization	Cell surface
Applications	Immunohistochemistry (FFPE) : 1-2ug/ml for 30 min at RT
Limitations	This CD35 antibody is available for research use only.



IHC: Formalin-fixed, paraffin-embedded human tonsil stained with CD35 antibody (SPM554).



SDS-PAGE analysis of purified, BSA-free CD35 antibody (clone SPM554) as confirmation of integrity and purity.

Description

Recognizes a protein of 210-220kDa, which is identified as the Complement receptor 1 or CD35. This mAb is specific for a site in CR1 that is distal from the C3b-binding site, so that it is unable to block CR1/CD35 activity. It is highly specific and shows no cross-reaction with CR2/CD21. The primary function of CR1 is to serve as the cellular receptor for C3b and C4b, the most important components of the complement system leading to clearance of foreign macromolecules. The Knops blood group system is a system of antigens located on this protein. Follicular dendritic cells (FDC) are restricted to the B-cell regions of secondary lymphoid follicles. They are CD21+/CD35+/CD1a-. This mAb labels follicular dendritic cells and follicular dendritic cell sarcoma.

For a validated reference of CD35 expression highlighting follicular dendritic cell networks in lymphoid tissue, see [CD35 antibody clone CR1/6378](#) with supporting immunohistochemistry data.

Application Notes

The optimal dilution of the CD35 antibody for each application should be determined by the researcher.

1. Staining of formalin-fixed tissues requires boiling tissue sections in pH 9 10mM Tris with 1mM EDTA for 10-20 min followed by cooling at RT for 20 minutes.
2. The prediluted format is supplied in a dropper bottle and is optimized for use in IHC. After epitope retrieval step (if required), drip mAb solution onto the tissue section and incubate at RT for 30 min.

Immunogen

Human monocytes were used as the immunogen for this CD35 antibody.

Storage

Store the CD35 antibody at 2-8oC (with azide) or aliquot and store at -20oC or colder (without azide).

Alternate Names

Complement receptor 1