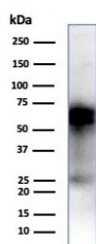


CD33 Antibody / SIGLEC3 [clone SIGLEC3/7612] (V4644)

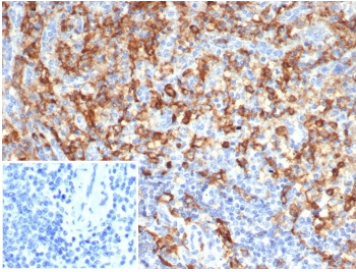
Catalog No.	Formulation	Size
V4644-100UG	0.2 mg/ml in 1X PBS with 0.1 mg/ml BSA (US sourced), 0.05% sodium azide	100 ug
V4644-20UG	0.2 mg/ml in 1X PBS with 0.1 mg/ml BSA (US sourced), 0.05% sodium azide	20 ug
V4644SAF-100UG	1 mg/ml in 1X PBS; BSA free, sodium azide free	100 ug

[Bulk quote request](#)

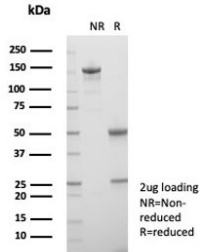
Availability	1-3 business days
Species Reactivity	Human
Format	Purified
Host	Mouse
Clonality	Monoclonal (mouse origin)
Isotype	Mouse IgG2, kappa
Clone Name	SIGLEC3/7612
Purity	Protein A/G affinity
UniProt	P20138
Localization	Cell Surface, Cytoplasm
Applications	Western Blot : 1-2ug/ml Immunohistochemistry (FFPE) : 1-2ug/ml for 30 min at RT
Limitations	This CD33 antibody is available for research use only.



Western blot testing of human THP-1 cell lysate with CD33 antibody (clone SIGLEC3/7612). Predicted molecular weight is 40-67 kDa depending on glycosylation level.



IHC staining of FFPE human spleen tissue with CD33 antibody (clone SIGLEC3/7612). Inset: PBS used in place of primary Ab (secondary Ab negative control). HIER: boil tissue sections in pH 9 10mM Tris with 1mM EDTA for 20 min and allow to cool before testing.



SDS-PAGE analysis of purified, BSA-free CD33 antibody (clone SIGLEC3/7612) as confirmation of integrity and purity.

Description

Recognizes a 67kDa glycoprotein, which is identified as CD33. It is a transmembrane protein of the sialic acid-binding immunoglobulin-like lectin (Siglec) family. It belongs to the immunoreceptor tyrosine-based inhibitory motif (ITIM)-containing molecules able of recruiting protein tyrosine phosphatases SHP-1 and SHP-2 to signal assemblies; these ITIMs are also used for ubiquitin-mediated removal of the receptor from the cell surface. CD33 is expressed on cells of myelomonocytic lineage, binds sialic acid residues in N- and O-glycans on cell surfaces, and is a therapeutic target for acute myeloid leukemia. CD33 is expressed on myeloid progenitors, monocytes, granulocytes, dendritic cells and mast cells. It is absent on platelets, lymphocytes, erythrocytes and hematopoietic stem cells.

Application Notes

Optimal dilution of the CD33 antibody should be determined by the researcher.

Immunogen

A recombinant fragment of human CD33 protein was used as the immunogen for the CD33 antibody.

Storage

Aliquot the CD33 antibody and store frozen at -20oC or colder. Avoid repeated freeze-thaw cycles.