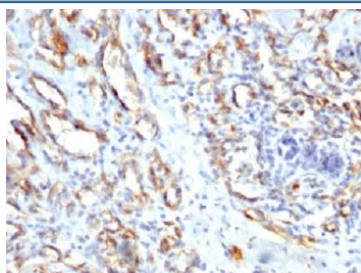


## CD31 Antibody / PECAM-1 (V3208)

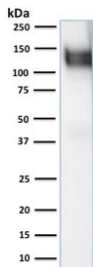
Catalog No.	Formulation	Size
V3208-100UG	0.2 mg/ml in 1X PBS with 0.1 mg/ml BSA (US sourced) and 0.05% sodium azide	100 ug
V3208-20UG	0.2 mg/ml in 1X PBS with 0.1 mg/ml BSA (US sourced) and 0.05% sodium azide	20 ug
V3208SAF-100UG	1 mg/ml in 1X PBS; BSA free, sodium azide free	100 ug

[Bulk quote request](#)

<b>Species Reactivity</b>	Human
<b>Format</b>	Purified
<b>Clonality</b>	Polyclonal (rabbit origin)
<b>Isotype</b>	Rabbit IgG
<b>Purity</b>	Protein A affinity
<b>Buffer</b>	1X PBS, pH 7.4
<b>UniProt</b>	P16284
<b>Gene ID</b>	5175
<b>Localization</b>	Cell surface and cytoplasmic
<b>Applications</b>	Flow Cytometry : 1-2ug/10 <sup>6</sup> cells Western Blot : 1-2ug/ml Immunohistochemistry (FFPE) : 1-2ug/ml for 30 min at RT
<b>Limitations</b>	This CD31 antibody is available for research use only.



IHC staining of FFPE human angiocarcinoma with CD31 antibody. HIER: steam sections in pH7.5-8.5, 1mM EDTA for 10-20 min.



Western blot testing of human ThP1 cell lysate with CD31 antibody. Expected molecular weight: 83-130 kDa depending on level of glycosylation.

## Description

CD31 is found on the surface of platelets, monocytes, neutrophils, and some types of T-cells, and makes up a large portion of endothelial cell intercellular junctions. It is a member of the immunoglobulin superfamily and is likely involved in leukocyte migration, angiogenesis, and integrin activation. [RefSeq]

## Application Notes

Titering of the CD31 antibody may be required for optimal performance.

## Immunogen

Human protein was used as the immunogen for the CD31 antibody.

## Storage

Store the CD31 antibody at 2-8°C (with azide) or aliquot and store at -20°C or colder (without azide).