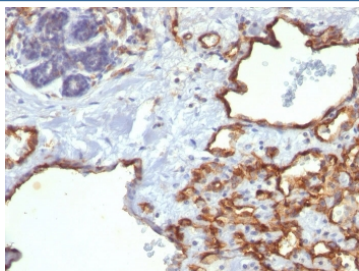


CD31 Antibody / PECAM-1 [clone SPM122] (V8359)

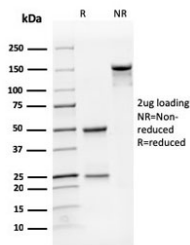
Catalog No.	Formulation	Size
V8359-100UG	0.2 mg/ml in 1X PBS with 0.1 mg/ml BSA (US sourced) and 0.05% sodium azide	100 ug
V8359-20UG	0.2 mg/ml in 1X PBS with 0.1 mg/ml BSA (US sourced) and 0.05% sodium azide	20 ug
V8359SAF-100UG	1 mg/ml in 1X PBS; BSA free, sodium azide free	100 ug

Bulk quote request

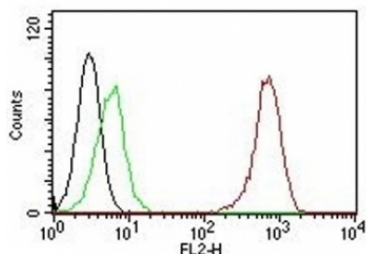
Availability	1-3 business days
Species Reactivity	Human
Format	Purified
Clonality	Monoclonal (mouse origin)
Isotype	Mouse IgG1, kappa
Clone Name	SPM122
Purity	Protein G affinity chromatography
UniProt	P16284
Localization	Cell surface, cytoplasmic
Applications	Immunohistochemistry (FFPE) : 1-2ug/ml Flow Cytometry : 1-3ug/million cells
Limitations	This CD31 antibody is available for research use only.



IHC staining of FFPE human angiosarcoma with CD31 antibody (clone SPM122). HIER: boil tissue sections in pH 9 10mM Tris with 1mM EDTA for 10-20 min and allow to cool before testing.



SDS-PAGE analysis of purified, BSA-free CD31 antibody (clone SPM122) as confirmation of integrity and purity.



Flow Cytometry testing of Jurkat cells. Black: cells alone; Green: isotype control; Red: PE-labeled PECAM antibody (SPM122).

Description

CD31 (PECAM-1) is a transmembrane glycoprotein member of the immunoglobulin supergene family of adhesion molecules. CD31 is expressed by stem cells of the hematopoietic system and is primarily used to identify and concentrate these cells for experimental studies as well as for bone marrow transplantation. Anti-CD31 has shown to be highly specific and sensitive for vascular endothelial cells. Staining of nonvascular tumors (excluding hematopoietic neoplasms) is rare. CD31 MAb reacts with normal, benign, and malignant endothelial cells which make up blood vessel lining. The level of CD31 expression can help to determine the degree of tumor angiogenesis, and a high level of CD31 expression may imply a rapidly growing tumor and potentially a predictor of tumor recurrence.

Application Notes

Optimal dilution of the CD31 antibody should be determined by the researcher.

Immunogen

A membrane preparation of a spleen from a patient with hairy cell leukemia was used as the immunogen for this CD31 antibody.

Storage

Store the CD31 antibody at 2-8°C (with azide) or aliquot and store at -20°C or colder (without azide).