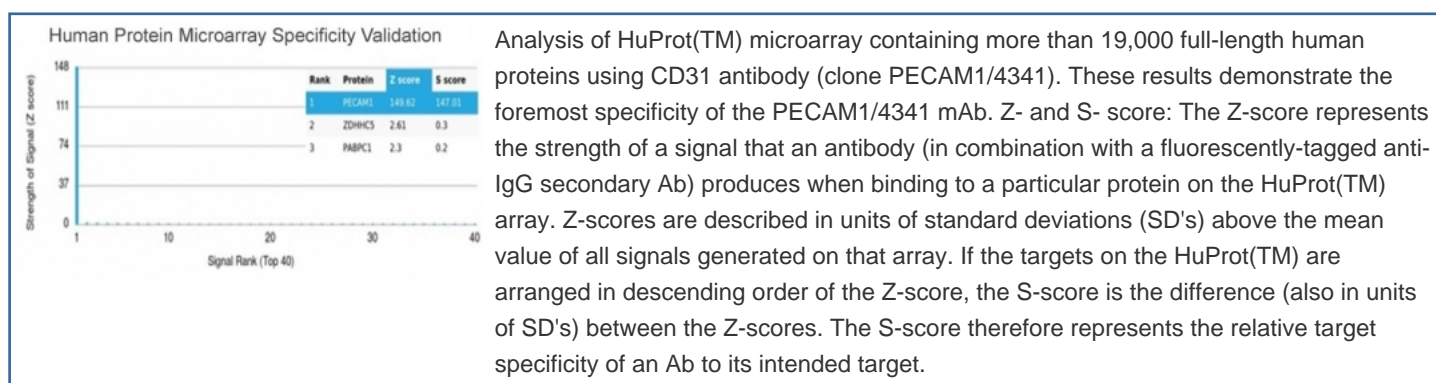


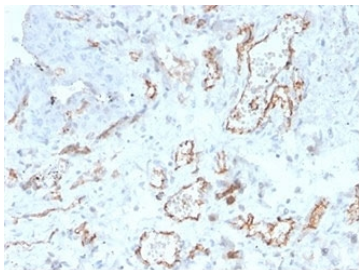
CD31 Antibody / PECAM-1 [clone PECAM1/4341] (V4043)

Catalog No.	Formulation	Size
V4043-100UG	0.2 mg/ml in 1X PBS with 0.1 mg/ml BSA (US sourced), 0.05% sodium azide	100 ug
V4043-20UG	0.2 mg/ml in 1X PBS with 0.1 mg/ml BSA (US sourced), 0.05% sodium azide	20 ug
V4043SAF-100UG	1 mg/ml in 1X PBS; BSA free, sodium azide free	100 ug

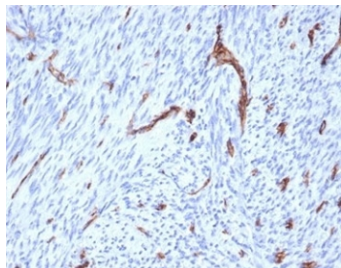
[Bulk quote request](#)

Availability	1-3 business days
Species Reactivity	Human
Format	Purified
Host	Mouse
Clonality	Monoclonal (mouse origin)
Isotype	Mouse IgG1, kappa
Clone Name	PECAM1/4341
Purity	Protein A/G affinity
UniProt	P16284
Applications	Immunohistochemistry (FFPE) : 1-2ug/ml
Limitations	This CD31 antibody is available for research use only.

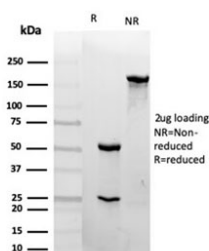




IHC staining of FFPE human cervix tissue with CD31 antibody (clone PECAM1/4341).
HIER: boil tissue sections in pH 9 10mM Tris with 1mM EDTA for 20 min and allow to cool before testing.



IHC staining of FFPE human uterus tissue with CD31 antibody (clone PECAM1/4341).
HIER: boil tissue sections in pH 9 10mM Tris with 1mM EDTA for 20 min and allow to cool before testing.



SDS-PAGE analysis of purified, BSA-free CD31 antibody (clone PECAM1/4341) as confirmation of integrity and purity.

Description

CD31 (PECAM-1) is a transmembrane glycoprotein member of the immunoglobulin supergene family of adhesion molecules. CD31 is expressed by stem cells of the hematopoietic system and is primarily used to identify and concentrate these cells for experimental studies as well as for bone marrow transplantation. Anti-CD31 has shown to be highly specific and sensitive for vascular endothelial cells. Staining of nonvascular tumors (excluding hematopoietic neoplasms) is rare. CD31 MAb reacts with normal, benign, and malignant endothelial cells which make up blood vessel lining. The level of CD31 expression can help to determine the degree of tumor angiogenesis, and a high level of CD31 expression may imply a rapidly growing tumor and potentially a predictor of tumor recurrence.

Application Notes

Optimal dilution of the CD31 antibody should be determined by the researcher.

Immunogen

A portion of amino acids 1-350 from the human protein was used as the immunogen for the CD31 antibody.

Storage

Aliquot the CD31 antibody and store frozen at -20°C or colder. Avoid repeated freeze-thaw cycles.

