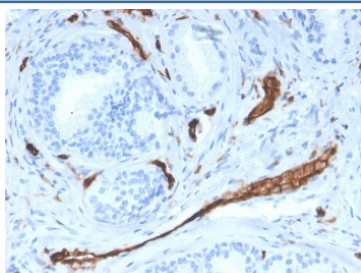


CD31 Antibody / PECAM-1 [clone PECAM1/3528] (V8003)

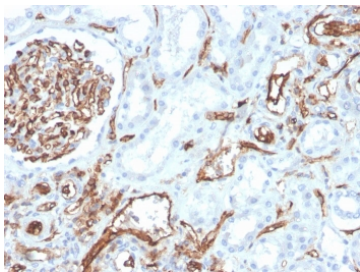
| Catalog No. | Formulation | Size |
|----------------|--|--------|
| V8003-100UG | 0.2 mg/ml in 1X PBS with 0.1 mg/ml BSA (US sourced) and 0.05% sodium azide | 100 ug |
| V8003-20UG | 0.2 mg/ml in 1X PBS with 0.1 mg/ml BSA (US sourced) and 0.05% sodium azide | 20 ug |
| V8003SAF-100UG | 1 mg/ml in 1X PBS; BSA free, sodium azide free | 100 ug |

Bulk quote request

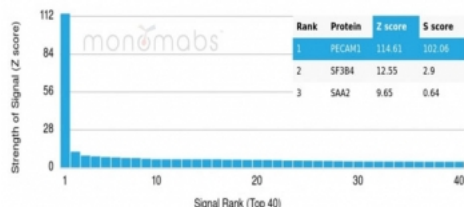
| | |
|---------------------------|---|
| Availability | 1-3 business days |
| Species Reactivity | Human |
| Format | Purified |
| Clonality | Monoclonal (mouse origin) |
| Isotype | Mouse IgG1, kappa |
| Clone Name | PECAM1/3528 |
| Purity | Protein G affinity chromatography |
| UniProt | P16284 |
| Localization | Cell surface, cytoplasmic |
| Applications | Immunohistochemistry (FFPE) : 1-2ug/ml Western Blot : 1-2ug/ml |
| Limitations | This CD31 antibody is available for research use only. |



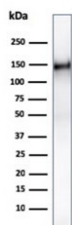
IHC staining of FFPE human prostate with CD31 antibody (clone PECAM1/3528). HIER: boil tissue sections in pH 9 10mM Tris with 1mM EDTA for 10-20 min and allow to cool before testing.



IHC staining of FFPE human kidney with CD31 antibody (clone PECAM1/3528). HIER: boil tissue sections in pH 9 10mM Tris with 1mM EDTA for 10-20 min and allow to cool before testing.



Analysis of HuProt(TM) microarray containing more than 19,000 full-length human proteins using CD31 antibody (clone PECAM1/3528). These results demonstrate the foremost specificity of the PECAM1/3528 mAb. Z- and S- score: The Z-score represents the strength of a signal that an antibody (in combination with a fluorescently-tagged anti-IgG secondary Ab) produces when binding to a particular protein on the HuProt(TM) array. Z-scores are described in units of standard deviations (SD's) above the mean value of all signals generated on that array. If the targets on the HuProt(TM) are arranged in descending order of the Z-score, the S-score is the difference (also in units of SD's) between the Z-scores. The S-score therefore represents the relative target specificity of an Ab to its intended target.



Western blot testing of human ThP1 cell lysate with CD31 antibody (clone PECAM1/3528). Expected molecular weight: 83-130 kDa depending on level of glycosylation.

Description

CD31 (PECAM-1) is a transmembrane glycoprotein member of the immunoglobulin supergene family of adhesion molecules. CD31 is expressed by stem cells of the hematopoietic system and is primarily used to identify and concentrate these cells for experimental studies as well as for bone marrow transplantation. Anti-CD31 has shown to be highly specific and sensitive for vascular endothelial cells. Staining of nonvascular tumors (excluding hematopoietic neoplasms) is rare. CD31 MAb reacts with normal, benign, and malignant endothelial cells which make up blood vessel lining. The level of CD31 expression can help to determine the degree of tumor angiogenesis, and a high level of CD31 expression may imply a rapidly growing tumor and potentially a predictor of tumor recurrence.

Application Notes

Optimal dilution of the CD31 antibody should be determined by the researcher.

Immunogen

A recombinant human partial protein (amino acids 625-738) was used as the immunogen for the CD31 antibody.

Storage

Store the CD31 antibody at 2-8°C (with azide) or aliquot and store at -20°C or colder (without azide).

