

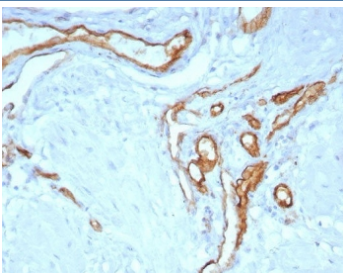
## CD31 Antibody / PECAM-1 [clone C31/8243R] (V4540)

Catalog No.	Formulation	Size
V4540-100UG	0.2 mg/ml in 1X PBS with 0.1 mg/ml BSA (US sourced), 0.05% sodium azide	100 ug
V4540-20UG	0.2 mg/ml in 1X PBS with 0.1 mg/ml BSA (US sourced), 0.05% sodium azide	20 ug
V4540SAF-100UG	1 mg/ml in 1X PBS; BSA free, sodium azide free	100 ug

Recombinant **RABBIT MONOCLONAL**

[Bulk quote request](#)

<b>Availability</b>	1-3 business days
<b>Species Reactivity</b>	Human
<b>Format</b>	Purified
<b>Host</b>	Rabbit
<b>Clonality</b>	Recombinant Rabbit Monoclonal
<b>Isotype</b>	Rabbit IgG, kappa
<b>Clone Name</b>	C31/8243R
<b>Purity</b>	Protein A/G affinity
<b>UniProt</b>	P16284
<b>Localization</b>	Cell Surface, Cytoplasm
<b>Applications</b>	Western Blot : 1-2ug/ml Immunohistochemistry (FFPE) : 1-2ug/ml for 30 min at RT
<b>Limitations</b>	This CD31 antibody is available for research use only.



IHC staining of FFPE human uterus tissue with CD31 antibody (clone C31/8243R).  
HIER: boil tissue sections in pH 9 10mM Tris with 1mM EDTA for 20 min and allow to cool before testing.

### Description

CD31 (PECAM-1) is a transmembrane glycoprotein member of the immunoglobulin supergene family of adhesion

molecules. CD31 is expressed by stem cells of the hematopoietic system and is primarily used to identify and concentrate these cells for experimental studies as well as for bone marrow transplantation. Anti-CD31 has shown to be highly specific and sensitive for vascular endothelial cells. Staining of nonvascular tumors (excluding hematopoietic neoplasms) is rare. CD31 mAb reacts with normal, benign, and malignant endothelial cells which make up blood vessel lining. The level of CD31 expression can help to determine the degree of tumor angiogenesis, and a high level of CD31 expression may imply a rapidly growing tumor and potentially a predictor of tumor recurrence.

## **Application Notes**

Optimal dilution of the CD31 antibody should be determined by the researcher.

## **Immunogen**

A recombinant partial protein sequence (within amino acids 28-330) from the human protein was used as the immunogen for the CD31 antibody.

## **Storage**

Aliquot the CD31 antibody and store frozen at -20oC or colder. Avoid repeated freeze-thaw cycles.