

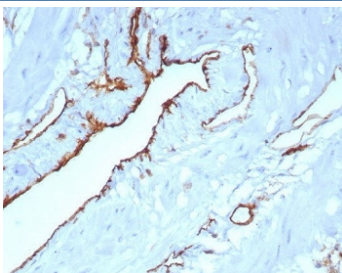
CD31 Antibody / PECAM-1 [clone C31/8242R] (V4539)

Catalog No.	Formulation	Size
V4539-100UG	0.2 mg/ml in 1X PBS with 0.1 mg/ml BSA (US sourced), 0.05% sodium azide	100 ug
V4539-20UG	0.2 mg/ml in 1X PBS with 0.1 mg/ml BSA (US sourced), 0.05% sodium azide	20 ug
V4539SAF-100UG	1 mg/ml in 1X PBS; BSA free, sodium azide free	100 ug

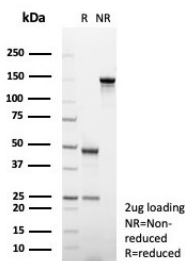
Recombinant **RABBIT MONOCLONAL**

[Bulk quote request](#)

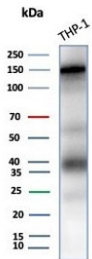
Availability	1-3 business days
Species Reactivity	Human
Format	Purified
Host	Rabbit
Clonality	Recombinant Rabbit Monoclonal
Isotype	Rabbit IgG, kappa
Clone Name	C31/8242R
Purity	Protein A/G affinity
UniProt	P16284
Localization	Cell Surface, Cytoplasm
Applications	Western Blot : 1-2ug/ml Immunohistochemistry (FFPE) : 1-2ug/ml for 30 min at RT
Limitations	This CD31 antibody is available for research use only.



IHC staining of FFPE human uterus tissue with CD31 antibody (clone C31/8242R).
HIER: boil tissue sections in pH 9 10mM Tris with 1mM EDTA for 20 min and allow to cool before testing.



SDS-PAGE analysis of purified, BSA-free CD31 antibody (clone C31/8242R) as confirmation of integrity and purity.



Western blot testing of human THP-1 cell lysate with CD31 antibody (clone C31/8242R). Expected molecular weight: 83-130 kDa depending on level of glycosylation.

Description

CD31 (PECAM-1) is a transmembrane glycoprotein member of the immunoglobulin supergene family of adhesion molecules. CD31 is expressed by stem cells of the hematopoietic system and is primarily used to identify and concentrate these cells for experimental studies as well as for bone marrow transplantation. Anti-CD31 has shown to be highly specific and sensitive for vascular endothelial cells. Staining of nonvascular tumors (excluding hematopoietic neoplasms) is rare. CD31 mAb reacts with normal, benign, and malignant endothelial cells which make up blood vessel lining. The level of CD31 expression can help to determine the degree of tumor angiogenesis, and a high level of CD31 expression may imply a rapidly growing tumor and potentially a predictor of tumor recurrence.

Application Notes

Optimal dilution of the CD31 antibody should be determined by the researcher.

Immunogen

A recombinant partial protein sequence (within amino acids 28-330) from the human protein was used as the immunogen for the CD31 antibody.

Storage

Aliquot the CD31 antibody and store frozen at -20°C or colder. Avoid repeated freeze-thaw cycles.