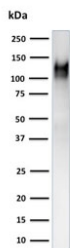


## CD31 Antibody / PECAM-1 [clone C31.3 + JC/70A] (V8880)

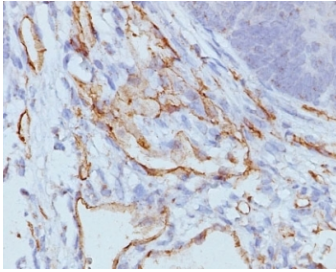
Catalog No.	Formulation	Size
V8880-100UG	0.2 mg/ml in 1X PBS with 0.1 mg/ml BSA (US sourced), 0.05% sodium azide	100 ug
V8880-20UG	0.2 mg/ml in 1X PBS with 0.1 mg/ml BSA (US sourced), 0.05% sodium azide	20 ug
V8880SAF-100UG	1 mg/ml in 1X PBS; BSA free, sodium azide free	100 ug

[Bulk quote request](#)

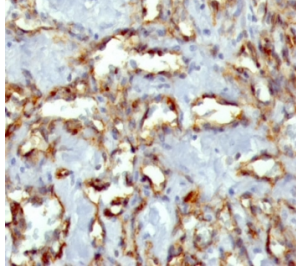
<b>Availability</b>	1-3 business days
<b>Species Reactivity</b>	Human
<b>Format</b>	Purified
<b>Host</b>	Mouse
<b>Clonality</b>	Monoclonal (mouse origin)
<b>Isotype</b>	Mouse IgG1, kappa + Mouse IgG1, kappa
<b>Clone Name</b>	C31.3 + JC/70A
<b>Purity</b>	Protein A/G affinity
<b>UniProt</b>	P16284
<b>Localization</b>	Cell surface and cytoplasm of endothelial cells
<b>Applications</b>	Western Blot : 1-2ug/ml Immunohistochemistry (FFPE) : 1-2ug/ml
<b>Limitations</b>	This CD31 antibody is available for research use only.



Western blot testing of human THP-1 cell lysate using CD31 antibody (clone C31.3 + JC/70A). Expected molecular weight: 83-130 kDa depending on level of glycosylation.



IHC staining of FFPE human colon carcinoma tissue with CD31 antibody (clone C31.3 + JC/70A). HIER: boil tissue sections in pH 9 10mM Tris with 1mM EDTA for 20 min and allow to cool before testing.



IHC staining of FFPE human angiosarcoma with CD31 antibody (clone C31.3 + JC/70A). HIER: boil tissue sections in pH 9 10mM Tris with 1mM EDTA for 20 min and allow to cool before testing.

## Description

CD31 (PECAM-1) is a transmembrane glycoprotein member of the immunoglobulin supergene family of adhesion molecules. CD31 is expressed by stem cells of the hematopoietic system and is primarily used to identify and concentrate these cells for experimental studies as well as for bone marrow transplantation. Anti-CD31 has shown to be highly specific and sensitive for vascular endothelial cells. Staining of nonvascular tumors (excluding hematopoietic neoplasms) is rare. CD31 MAb reacts with normal, benign, and malignant endothelial cells which make up blood vessel lining. The level of CD31 expression can help to determine the degree of tumor angiogenesis, and a high level of CD31 expression may imply a rapidly growing tumor and potentially a predictor of tumor recurrence.

## Application Notes

Optimal dilution of the CD31 antibody should be determined by the researcher.

## Immunogen

Human recombinant CD31 protein (clone C31.3) & membrane preparation of a spleen from a patient with hairy cell leukemia (clone JC/70A) was used as the immunogen for the CD31 antibody.

## Storage

Aliquot the CD31 antibody and store frozen at -20°C or colder. Avoid repeated freeze-thaw cycles.