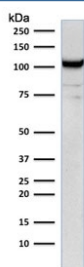


CD31 Antibody / PECAM-1 [clone C31.12] (V3189)

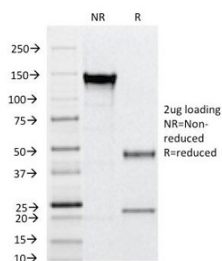
Catalog No.	Formulation	Size
V3189-100UG	0.2 mg/ml in 1X PBS with 0.1 mg/ml BSA (US sourced) and 0.05% sodium azide	100 ug
V3189-20UG	0.2 mg/ml in 1X PBS with 0.1 mg/ml BSA (US sourced) and 0.05% sodium azide	20 ug
V3189SAF-100UG	1 mg/ml in 1X PBS; BSA free, sodium azide free	100 ug

[Bulk quote request](#)

Species Reactivity	Human
Format	Purified
Clonality	Monoclonal (mouse origin)
Isotype	Mouse IgG1, kappa
Clone Name	C31.12
Purity	Protein G affinity chromatography
Buffer	1X PBS, pH 7.4
Gene ID	5175
Localization	Cell surface and cytoplasmic
Applications	Flow Cytometry : 1-2ug/10 ⁶ cells Immunofluorescence : 1-2ug/ml Western Blot : 1-2ug/ml
Limitations	This CD31 antibody is available for research use only.



Western blot testing of human Jurkat cell lysate with CD31 antibody (clone C31.1).
Expected molecular weight: 83-130 kDa depending on level of glycosylation.



SDS-PAGE analysis of purified, BSA-free CD31 antibody (clone C31.12) as confirmation of integrity and purity.

Description

CD31 (PECAM-1) is a transmembrane glycoprotein member of the immunoglobulin supergene family of adhesion molecules. CD31 is expressed by stem cells of the hematopoietic system and is primarily used to identify and concentrate these cells for experimental studies as well as for bone marrow transplantation. Anti-CD31 has shown to be highly specific and sensitive for vascular endothelial cells. Staining of nonvascular tumors (excluding hematopoietic neoplasms) is rare. CD31 mAb reacts with normal, benign, and malignant endothelial cells which make up blood vessel lining. The level of CD31 expression can help to determine the degree of tumor angiogenesis, and a high level of CD31 expression may imply a rapidly growing tumor and potentially a predictor of tumor recurrence.

Application Notes

The concentration stated for each application is a general starting point. Variations in protocols, secondaries and substrates may require the CD31 antibody to be titrated up or down for optimal performance.

Immunogen

Human full length recombinant protein was used as the immunogen for this CD31 antibody.

Storage

Store the CD31 antibody at 2-8°C (with azide) or aliquot and store at -20°C or colder (without azide).

References (1)