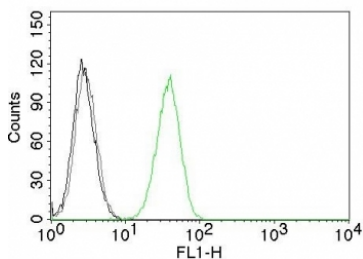


CD31 Antibody / PECAM-1 [clone C31.10] (V2782CF488)

Catalog No.	Formulation	Size
V2782CF488-100T	500 ul at 0.1 mg/ml with 0.1 mg/ml BSA (US sourced), 0.05% sodium azide	100 Tests

[Bulk quote request](#)

Availability	1-3 business days
Species Reactivity	Human
Format	CF488 Conjugate
Host	Mouse
Clonality	Monoclonal (mouse origin)
Isotype	Mouse IgG1, kappa
Clone Name	C31.10
Purity	Protein G affinity chromatography
UniProt	P16284
Localization	Cell surface, cytoplasmic
Applications	Flow Cytometry : 5ul per test per one 10 ⁶ cells in 0.1ml or 5ul per 100ul of whole blood
Limitations	This CD31 antibody is available for research use only.



Flow cytometry test of human Jurkat cells. Black: cells alone; Grey: isotype control; Green: CD31 antibody (clone C31.10).

Description

CD31 (PECAM-1) is a transmembrane glycoprotein member of the immunoglobulin supergene family of adhesion molecules. CD31 is expressed by stem cells of the hematopoietic system and is primarily used to identify and concentrate these cells for experimental studies as well as for bone marrow transplantation. Anti-CD31 has shown to be highly specific and sensitive for vascular endothelial cells. Staining of nonvascular tumors (excluding hematopoietic neoplasms) is rare. CD31 MAb reacts with normal, benign, and malignant endothelial cells which make up blood vessel lining. The

level of CD31 expression can help to determine the degree of tumor angiogenesis, and a high level of CD31 expression may imply a rapidly growing tumor and potentially a predictor of tumor recurrence.

Application Notes

Optimal dilution of the CD31 antibody should be determined by the researcher.

Immunogen

Recombinant human protein was used as the immunogen for the CD31 antibody.

Storage

Store the CD31 antibody at 2-8oC, protected from light.