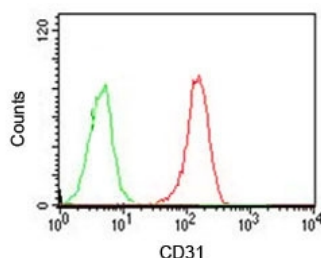


## CD31 Antibody [clone PCM25-1] (V7005)

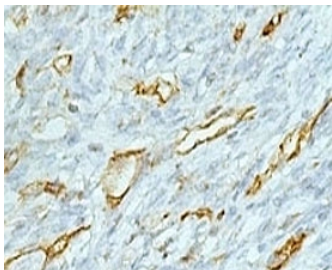
Catalog No.	Formulation	Size
V7005-100UG	0.2 mg/ml in 1X PBS with 0.1 mg/ml BSA (US sourced) and 0.05% sodium azide	100 ug
V7005-20UG	0.2 mg/ml in 1X PBS with 0.1 mg/ml BSA (US sourced) and 0.05% sodium azide	20 ug
V7005SAF-100UG	1 mg/ml in 1X PBS; BSA free, sodium azide free	100 ug
V7005IHC-7ML	Prediluted in 1X PBS with 0.1 mg/ml BSA (US sourced) and 0.05% sodium azide; *For IHC use only*	7 ml

[Bulk quote request](#)

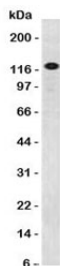
<b>Species Reactivity</b>	Human
<b>Format</b>	Purified
<b>Clonality</b>	Monoclonal (mouse origin)
<b>Isotype</b>	Mouse IgG1, k
<b>Clone Name</b>	PCM25-1
<b>Purity</b>	Protein G affinity chromatography
<b>Gene ID</b>	5175
<b>Localization</b>	Cell surface and cytoplasmic
<b>Applications</b>	Western Blot : 1-2 ug/ml Flow Cytometry : 1-2ug/10e6 cells Immunohistochemistry (FFPE) : 1-2ug/ml for 30 min at RT (1) Prediluted IHC Only Format : incubate for 30 min at RT (2)
<b>Limitations</b>	This CD31 antibody is available for research use only.



FACS testing of Jurkat cells with an isotype control (green) and CD31 antibody (red).



IHC testing of FFPE colon carcinoma and CD31 antibody (clone PCM25-1). Staining of formalin-fixed tissues requires boiling tissue sections in 1mM EDTA, pH 7.5-8.5, for 10-20 min followed by cooling at RT for 20 minutes.



Western blot testing of human ThP-1 cells using CD31 antibody (clone PCM25-1). Expected molecular weight: 83-130 kDa depending on level of glycosylation.

## Description

CD31 is found on the surface of platelets, monocytes, neutrophils, and some types of T-cells, and makes up a large portion of endothelial cell intercellular junctions. It is a member of the immunoglobulin superfamily and is likely involved in leukocyte migration, angiogenesis, and integrin activation. [RefSeq]

## Application Notes

Titering of the CD31 antibody may be required for optimal performance.

1. The prediluted format is supplied in a dropper bottle and is optimized for use in IHC. After epitope retrieval step (if required), drip mAb solution onto the tissue section and incubate at RT for 30 min.

## Immunogen

Recombinant human protein was used as the immunogen for this CD31 antibody.

## Storage

CD31 antibody with azide can be stored at 2-8°C. The azide-free format should be aliquoted and stored at -20°C or colder.