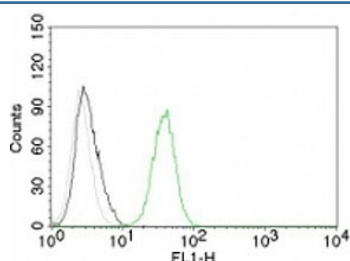


## CD31 Antibody [clone C31.10] (V2782)

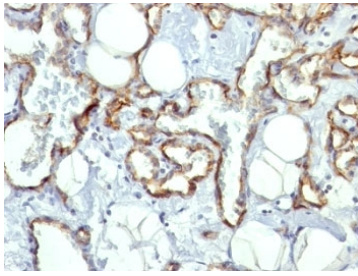
Catalog No.	Formulation	Size
V2782-100UG	0.2 mg/ml in 1X PBS with 0.1 mg/ml BSA (US sourced) and 0.05% sodium azide	100 ug
V2782-20UG	0.2 mg/ml in 1X PBS with 0.1 mg/ml BSA (US sourced) and 0.05% sodium azide	20 ug
V2782SAF-100UG	1 mg/ml in 1X PBS; BSA free, sodium azide free	100 ug
V2782IHC-7ML	Prediluted in 1X PBS with 0.1 mg/ml BSA (US sourced) and 0.05% sodium azide; *For IHC use only*	7 ml

[Bulk quote request](#)

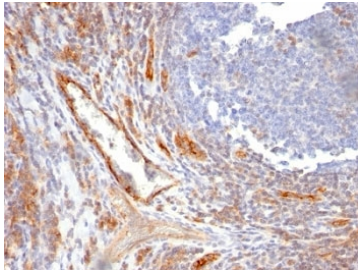
Availability	1-3 business days
Species Reactivity	Human
Format	Purified
Host	Mouse
Clonality	Monoclonal (mouse origin)
Isotype	Mouse IgG1, kappa
Clone Name	C31.10
Purity	Protein G affinity chromatography
UniProt	P16284
Localization	Cell surface and cytoplasm of endothelial cells
Applications	Flow Cytometry : 1-2ug/10 <sup>6</sup> cells Western Blot : 1-2ug/ml Immunohistochemistry (FFPE) : 1-2ug/ml for 30 min at RT
Limitations	This CD31 antibody is available for research use only.



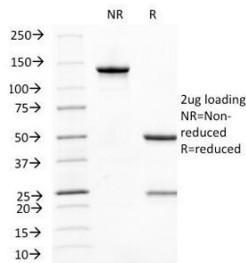
Flow cytometry test of Jurkat cells. Black: cells alone; Grey: isotype control; Green: AF488-labeled CD31 antibody (C31.10).



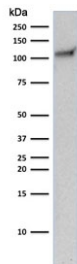
IHC: Formalin-fixed, paraffin-embedded human angiosarcoma stained with CD31 antibody (C31.10).



IHC: Formalin-fixed, paraffin-embedded human tonsil stained with CD31 antibody (C31.10).



SDS-PAGE Analysis of Purified, BSA-Free CD31 Antibody (clone C31.10). Confirmation of Integrity and Purity of the Antibody.



Western blot testing of human Jurkat cell lysate with CD31 antibody (clone C31.10). Predicted size: 83-130 kDa depending on level of glycosylation.

## Description

CD31 (PECAM-1) is a transmembrane glycoprotein member of the immunoglobulin supergene family of adhesion molecules. CD31 is expressed by stem cells of the hematopoietic system and is primarily used to identify and concentrate these cells for experimental studies as well as for bone marrow transplantation. Anti-CD31 has shown to be highly specific and sensitive for vascular endothelial cells. Staining of nonvascular tumors (excluding hematopoietic neoplasms) is rare. CD31 mAb reacts with normal, benign, and malignant endothelial cells which make up blood vessel lining. The level of CD31 expression can help to determine the degree of tumor angiogenesis, and a high level of CD31 expression may imply a rapidly growing tumor and potentially a predictor of tumor recurrence.

## Application Notes

Optimal dilution of the CD31 antibody should be determined by the researcher.

1. Staining of formalin-fixed tissues requires boiling tissue sections in 10mM Tris buffer with 1mM EDTA, pH 9.0, for 10-20 min followed by cooling at RT for 20 min
2. The prediluted format is supplied in a dropper bottle and is optimized for use in IHC. After epitope retrieval step (if required), drip mAb solution onto the tissue section and incubate at RT for 30 min.

## Immunogen

Recombinant human protein was used as the immunogen for the CD31 antibody.

## Storage

Store the CD31 antibody at 2-8oC (with azide) or aliquot and store at -20oC or colder (without azide).