

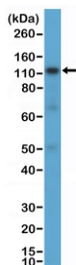
CD30 Antibody [clone RM425] (R20439)

Catalog No.	Formulation	Size
R20439-0.1ML	Antibody in PBS with 50% glycerol, 1% BSA and 0.09% sodium azide	100 ul

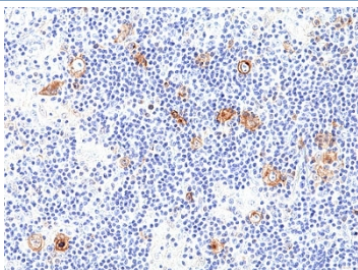
Recombinant **RABBIT MONOCLONAL**

[Bulk quote request](#)

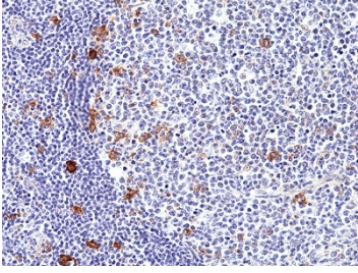
Availability	1-3 business days
Species Reactivity	Human
Format	Purified
Host	Rabbit
Clonality	Recombinant Rabbit Monoclonal
Isotype	Rabbit IgG
Clone Name	RM425
Purity	Protein A purified from animal origin-free supernatant
UniProt	P28908
Localization	Cell surface, cytoplasmic
Applications	Immunohistochemistry (FFPE) : 1:50 -1:100 Western Blot : 1:500-1:1000
Limitations	This recombinant CD30 antibody is available for research use only.



Western blot testing of human K562 cell lysate with recombinant CD30 antibody at 1:1000 dilution. Expected molecular weight: 53-120 kDa depending on glycosylation level.



IHC staining of FFPE human Hodgkins lymphoma tissue with recombinant CD30 antibody at 1:100.



IHC staining of FFPE human tonsil tissue with recombinant CD30 antibody at 1:100.

Description

This antibody reacts to human CD30.

Application Notes

The stated application concentrations are suggested starting points. Titration of the recombinant CD30 antibody may be required due to differences in protocols and secondary/substrate sensitivity.

Immunogen

A peptide corresponding to the C-terminus of human CD30 was used as the immunogen for the recombinant CD30 antibody.

Storage

Store the recombinant CD30 antibody at -20°C.