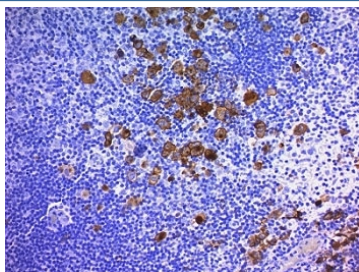


CD30 Antibody Cocktail [clone Ber-H2 + CD30/412] (V2994S)

Catalog No.	Formulation	Size
V2994S-0.5ML	Bioreactor concentrate with 0.05% sodium azide	0.5 ml
V2994S-0.1ML	Bioreactor concentrate with 0.05% sodium azide	0.1 ml

[Bulk quote request](#)

Availability	1-3 business days
Species Reactivity	Human
Format	Culture supernatant
Clonality	Monoclonal (mouse origin)
Isotype	Mouse IgGs
Clone Name	Ber-H2 + CD30/412
Purity	Unpurified high titer supernatant
UniProt	P28908
Localization	Cell surface, cytoplasmic
Applications	Immunohistochemistry (FFPE) : 1:100-1:200 for 30 min at RT (1)
Limitations	This CD30 antibody cocktail is available for research use only.



IHC: Formalin-fixed, paraffin-embedded human Hodgkin's lymphoma stained with CD30 antibody (Ber-H2 + CD30/412).

Description

Recognizes a single chain glycoprotein of 105/120kDa, identified as CD30/Ki-1. CD30 is synthesized as a 90kDa precursor, which is processed in the Golgi complex into a membrane-bound phosphorylated mature 105/120kDa glycoprotein. In Hodgkin's disease, CD30/Ki-1 antigen is expressed by mononuclear-Hodgkin and multinucleated Reed-Sternberg cells. It is also expressed by the tumor cells of a majority of anaplastic large cell lymphomas as well as by a varying proportion of activated T and B cells. This mAb distinguishes large cell lymphomas derived from activated

lymphoid cells from histiocytic malignancies and lymphomas derived from resting and precursor lymphoid cells or from anaplastic carcinomas. About one third of the Ki-1 positive lymphomas lack the leukocyte common antigen (CD45).

Application Notes

Optimal dilution of the CD30 antibody cocktail should be determined by the researcher.

1. Staining of formalin-fixed tissues requires boiling tissue sections in 10mM Citrate buffer, pH 6.0, for 10-20 min followed by cooling at RT for 20 min.

Immunogen

A Co cell line established from a patient with Hodgkin's disease of T-cell lineage (Ber-H2) and human recombinant protein (CD30/412) were used as the immunogen for the CD30 antibody cocktail.

Storage

Store the CD30 antibody cocktail at 2-8oC (with azide) or aliquot and store at -20oC or colder (without azide).