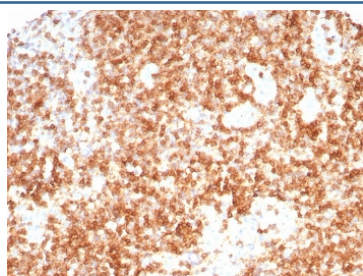


CD3 gamma Antibody [clone CD3G/8794] (V4207)

Catalog No.	Formulation	Size
V4207-100UG	0.2 mg/ml in 1X PBS with 0.1 mg/ml BSA (US sourced), 0.05% sodium azide	100 ug
V4207-20UG	0.2 mg/ml in 1X PBS with 0.1 mg/ml BSA (US sourced), 0.05% sodium azide	20 ug
V4207SAF-100UG	1 mg/ml in 1X PBS; BSA free, sodium azide free	100 ug

[Bulk quote request](#)

Availability	1-3 business days
Species Reactivity	Human
Format	Purified
Host	Mouse
Clonality	Monoclonal (mouse origin)
Isotype	Mouse IgG2c, kappa
Clone Name	CD3G/8794
Purity	Protein A/G affinity
UniProt	P09693
Localization	Membrane
Applications	Immunohistochemistry (FFPE) : 1-2ug/ml
Limitations	This CD3 gamma antibody is available for research use only.



IHC staining of FFPE human lymph node tissue with CD3G / CD3beta1 antibody (clone CD3G/8794). HIER: boil tissue sections in pH 9 10mM Tris with 1mM EDTA for 20 min and allow to cool before testing.

Description

The T cell antigen receptor (TCR) recognizes foreign antigens and translates such recognition events into intracellular signals that elicit a change in the cell from a dormant to an activated state. Much of this signaling process can be

attributed to a multisubunit complex of proteins that associates directly with the TCR. This complex has been designated CD3 (cluster of differentiation 3). It is composed of five invariant polypeptide chains that associate to form three dimers: a heterodimer of g and e chains (ge), a heterodimer of d and e chains (de) and a homodimer of two z chains (zz) or a heterodimer of z and h chains (zh). The z and h chains are encoded by the same gene but differ in their carboxyl-terminal ends due to an alternative splicing event. The g, e and d chains each contain a single copy of a conserved immunoreceptor tyrosinebased activation motif (ITAM). In contrast, the z chain contains three consecutive copies of the same motif. Phosphorylated ITAMs act as docking sites for protein kinases such as ZAP-70 and Syk and are also capable of regulating their kinase activity. The crystal structure of the ZAP-70 SH2 domains bound to the z chain ITAMs has been solved.

Application Notes

Optimal dilution of the CD3 gamma antibody should be determined by the researcher.

Immunogen

A recombinant partial protein sequence (within amino acids 1-182) from the human protein was used as the immunogen for the CD3 gamma antibody.

Storage

Aliquot the CD3 gamma antibody and store frozen at -20oC or colder. Avoid repeated freeze-thaw cycles.