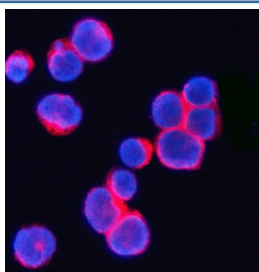


CD3 gamma Antibody / CD3g (RQ8022)

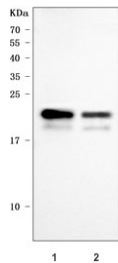
Catalog No.	Formulation	Size
RQ8022	0.5mg/ml if reconstituted with 0.2ml sterile DI water	100 ug

Bulk quote request

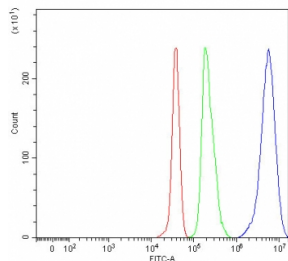
Availability	1-3 business days
Species Reactivity	Human
Format	Antigen affinity purified
Clonality	Polyclonal (rabbit origin)
Isotype	Rabbit IgG
Purity	Antigen affinity purified
Buffer	Lyophilized from 1X PBS with 2% Trehalose
UniProt	P09693
Localization	Cell membrane
Applications	Western Blot : 0.5-1ug/ml Immunofluorescence : 5ug/ml Flow Cytometry : 1-3ug/million cells Direct ELISA : 0.1-0.5ug/ml
Limitations	This CD3 gamma antibody is available for research use only.



Immunofluorescent staining of FFPE human JK cells with CD3 gamma antibody (red) and DAPI nuclear stain (blue). HIER: steam section in pH6 citrate buffer for 20 min.



Western blot testing of human 1) MOLT4 and 2) Jurkat cell lysate with CD3 gamma antibody. Predicted molecular weight ~21 kDa.



Flow cytometry testing of fixed and permeabilized human JK cells with CD3 gamma antibody at 1ug/million cells (blocked with goat sera); Red=cells alone, Green=isotype control, Blue= CD3 gamma antibody.

Description

T-cell surface glycoprotein CD3 gamma chain is a protein that in humans is encoded by the CD3G gene. The protein encoded by this gene is the CD3-gamma polypeptide, which together with CD3-epsilon, -delta and -zeta, and the T-cell receptor alpha/beta and gamma/delta heterodimers, forms the T-cell receptor-CD3 complex. This complex plays an important role in coupling antigen recognition to several intracellular signal-transduction pathways. The genes encoding the epsilon, gamma and delta polypeptides are located in the same cluster on chromosome 11. Defects in this gene are associated with T cell immunodeficiency.

Application Notes

Optimal dilution of the CD3 gamma antibody should be determined by the researcher.

Immunogen

E. coli-derived recombinant human protein (amino acids Q23-D165) was used as the immunogen for the CD3 gamma antibody.

Storage

After reconstitution, the CD3 gamma antibody can be stored for up to one month at 4oC. For long-term, aliquot and store at -20oC. Avoid repeated freezing and thawing.