

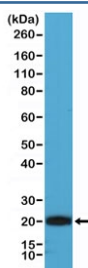
CD3 epsilon Antibody [clone RM344] (R20366)

Catalog No.	Formulation	Size
R20366-0.1ML	Antibody in PBS with 50% glycerol, 1% BSA and 0.09% sodium azide	100 ul

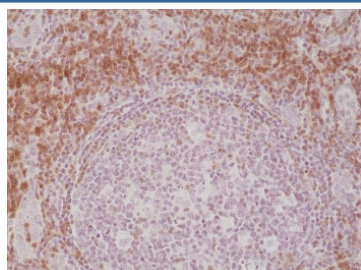
Recombinant **RABBIT MONOCLONAL**

[Bulk quote request](#)

Availability	1-3 business days
Species Reactivity	Human
Format	Purified
Host	Rabbit
Clonality	Recombinant Rabbit Monoclonal
Isotype	Rabbit IgG
Clone Name	RM344
Purity	Protein A purified from animal origin-free supernatant
UniProt	P07766
Localization	Cell surface, cytoplasm
Applications	Immunohistochemistry (FFPE) : 1:100-1:200 Western Blot : 1:1000-1:2000
Limitations	This recombinant CD3 epsilon antibody is available for research use only.



Western blot testing of human Jurkat cell lysate with recombinant CD3 epsilon antibody at 1:1000. Predicted molecular weight ~23 kDa.



IHC staining of FFPE human tonsil tissue with recombinant CD3 epsilon antibody at 1:200.

Description

This antibody reacts to the cytoplasmic domain of human CD3 epsilon chain.

Application Notes

The stated application concentrations are suggested starting points. Titration of the recombinant CD3 epsilon antibody may be required due to differences in protocols and secondary/substrate sensitivity.

Immunogen

A peptide corresponding to the C-terminus of human CD3 epsilon chain was used as the immunogen for the recombinant CD3 epsilon antibody.

Storage

Store the recombinant CD3 epsilon antibody at -20oC.