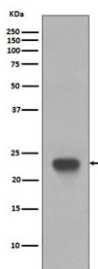


CD3 epsilon Antibody / CD3e [clone EED-3] (RQ5185)

Catalog No.	Formulation	Size
RQ5185	Antibody in PBS with 0.02% sodium azide, 50% glycerol and 0.4-0.5mg/ml BSA	100 ul

[Bulk quote request](#)

Availability	1-2 weeks
Species Reactivity	Human
Format	Purified
Clonality	Rabbit Monoclonal
Isotype	Rabbit IgG
Clone Name	EED-3
Purity	Affinity purified
UniProt	P07766
Applications	Western Blot : 1:500-1:2000
Limitations	This CD3 epsilon antibody is available for research use only.



Western blot testing of human Jurkat cell lysate with CD3 epsilon antibody. Predicted molecular weight ~23 kDa.

Description

The protein encoded by this gene is the CD3-epsilon polypeptide, which together with CD3-gamma, -delta and -zeta, and the T-cell receptor alpha/beta and gamma/delta heterodimers, forms the T-cell receptor-CD3 complex. This complex plays an important role in coupling antigen recognition to several intracellular signal-transduction pathways. The genes encoding the epsilon, gamma and delta polypeptides are located in the same cluster on chromosome 11. The epsilon polypeptide plays an essential role in T-cell development. Defects in this gene cause immunodeficiency. This gene has also been linked to a susceptibility to type I diabetes in women. [RefSeq]

Application Notes

Optimal dilution of the CD3 epsilon antibody should be determined by the researcher.

Immunogen

A synthetic peptide specific to human CD3 epsilon / CD3E was used as the immunogen for the CD3 epsilon antibody.

Storage

Store the CD3 epsilon antibody at -20oC.