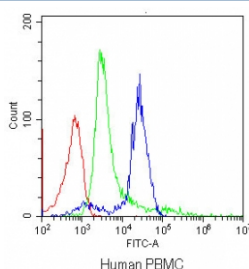


CD3 Antibody [clone CA-3] (R30014)

| Catalog No. | Formulation | Size |
|-------------|--|--------|
| R30014 | 0.5mg/ml with 1% BSA and 0.01% sodium azide if reconstituted with 0.2ml sterile 1X PBS | 100 ug |

[Bulk quote request](#)

| | |
|--------------------|---|
| Availability | 1-3 business days |
| Species Reactivity | Human |
| Format | Ascites |
| Clonality | Monoclonal (mouse origin) |
| Isotype | Mouse IgG1 |
| Clone Name | CA-3 |
| Purity | Ascites |
| Gene ID | 916 |
| Applications | IHC (Frozen) : 1ug/ml-formalin or acetone fixed tissues Flow Cytometry : 1-3ug/10 ⁶ cells |
| Limitations | This CD3 antibody is available for research use only. |



Flow cytometry testing of human PBMC with CD3 antibody at 1ug/10⁶ cells (blocked with goat sera); Red=cells alone, Green=isotype control, Blue=CD3 antibody.

Description

The alpha-beta heterodimeric T-cell antigen receptor binds antigen in association with major histocompatibility complex proteins on host cell surfaces. These 2 disulfide-linked glycoproteins, TCRA and TCRB are associated on T-cell surfaces with a complex of proteins called CD3(formerly T3). Human CD3 consists of at least 4 proteins: gamma, delta, epsilon, and zeta. The CD3-gamma/CD3-delta gene pair is within 300 kb of the CD3-epsilon gene and therefore these genes form a tightly linked cluster on 11q23. The clustering may be significant in terms of their simultaneous activations during T-cell development.

Application Notes

The stated application concentrations are suggested starting amounts. Titration of the CD3 antibody may be required due to differences in protocols and secondary/substrate sensitivity.

Immunogen

Human thymocytes followed by Sezary T cells was used as the immunogen for this CD3 antibody.

Storage

After reconstitution, the CD3 antibody can be stored for up to one month at 4°C. For long-term, aliquot and store at -20°C. Avoid repeated freezing and thawing.