

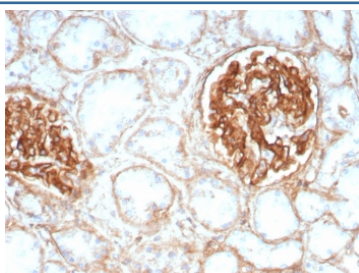
CD29 Antibody [clone ITGB1/8744R] (V4073)

Catalog No.	Formulation	Size
V4073-100UG	0.2 mg/ml in 1X PBS with 0.1 mg/ml BSA (US sourced), 0.05% sodium azide	100 ug
V4073-20UG	0.2 mg/ml in 1X PBS with 0.1 mg/ml BSA (US sourced), 0.05% sodium azide	20 ug
V4073SAF-100UG	1 mg/ml in 1X PBS; BSA free, sodium azide free	100 ug

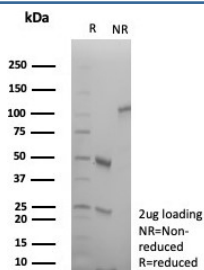
Recombinant **RABBIT MONOCLONAL**

[Bulk quote request](#)

Availability	1-3 business days
Species Reactivity	Human
Format	Purified
Clonality	Recombinant Rabbit Monoclonal
Isotype	Rabbit IgG, kappa
Clone Name	ITGB1/8744R
Purity	Protein A/G affinity
UniProt	P05556
Localization	Cell Surface
Applications	ELISA (Order BSA-free Format For Coating) : Immunohistochemistry (FFPE) : 1-2ug/ml for 30 minutes at RT
Limitations	This CD29 antibody is available for research use only.



IHC staining of FFPE human kidney tissue with CD29 antibody (clone ITGB1/8744R).
HIER: boil tissue sections in pH 9 10mM Tris with 1mM EDTA for 20 min and allow to cool before testing.



SDS-PAGE analysis of purified, BSA-free CD29 antibody (clone ITGB1/8744R) as confirmation of integrity and purity.

Description

This CD29 mAb binds to the cell membrane of T- and B- lymphocytes, monocytes, platelets, fibroblasts, endothelial cells, mast cells and smooth muscle cells. CD29 is an adhesion receptor and co-stimulatory molecule. This antigen was initially characterized as GPIIa on platelets and as the common b1 subunit of the very late antigen (VLA) protein family. CD29 forms a non-covalent heterodimeric complex with integrin alpha subunits. It also mediates adhesion to invasion and thrombospondin.

Application Notes

Optimal dilution of the CD29 antibody should be determined by the researcher.

Immunogen

Recombinant full-length human protein was used as the immunogen for the CD29 antibody.

Storage

Aliquot the CD29 antibody and store frozen at -20oC or colder. Avoid repeated freeze-thaw cycles.