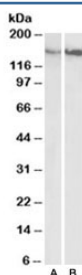


CD29 Antibody / Integrin beta 1 / ITGB1 (R34833)

Catalog No.	Formulation	Size
R34833-100UG	0.5 mg/ml in 1X TBS, pH7.3, with 0.5% BSA (US sourced) and 0.02% sodium azide	100 ug

[Bulk quote request](#)

Availability	1-3 business days
Species Reactivity	Human
Format	Antigen affinity purified
Host	Goat
Clonality	Polyclonal (goat origin)
Isotype	Goat Ig
Purity	Antigen affinity
Gene ID	3688
Applications	Western Blot : 0.3-1ug/ml ELISA (peptide) LOD : 1:128000
Limitations	This CD29 antibody is available for research use only.



Western blot testing of gastrointestinal cancer [A] and gall bladder cancer [B] lysates with CD29 antibody at 0.5ug/ml. Predicted molecular weight: 88/130~150 kDa (unmodified/glycosylated).

Description

Additional name(s) for this target protein: Integrin beta 1; ITGB1

Application Notes

Optimal dilution of the CD29 antibody should be determined by the researcher.

Immunogen

Amino acids NKCPKKDSDSFKIRP were used as the immunogen for this CD29 antibody.

Storage

Aliquot and store the CD29 antibody at -20oC.