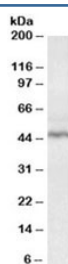


## CD28 Antibody (R36029)

| Catalog No.  | Formulation   | Size   |
|--------------|---|--------|
| R36029-100UG | 0.5 mg/ml in 1X TBS, pH7.3, with 0.5% BSA (US sourced) and 0.02% sodium azide | 100 ug |

[Bulk quote request](#)

|                    |  |
|--------------------|--|
| Availability       | 1-3 business days  |
| Species Reactivity | Human  |
| Format             | Antigen affinity purified                                  |
| Clonality          | Polyclonal (goat origin)                                   |
| Isotype            | Goat Ig  |
| Purity             | Antigen affinity   |
| Gene ID            | 940  |
| Applications       | Western Blot : 0.3-1ug/ml<br>ELISA (peptide) LOD : 1:64000 |
| Limitations        | This CD28 antibody is available for research use only.     |



Western blot testing of human tonsil lysate with CD28 antibody at 0.3ug/ml. Expected molecular weight depending on level of glycosylation: ~25-44 kDa (monomer), ~50-90kDa (dimer).

## Description

Additional name(s) for this target protein: T-cell-specific surface glycoprotein CD28 antibody

## Application Notes

Optimal dilution of the CD28 antibody should be determined by the researcher.

## Immunogen

Amino acids SQQLQVYSKTGFNCD were used as the immunogen for this CD28 antibody. The amino acid sequence

used as immunogen is from the extracellular portion of the protein.

## **Storage**

Aliquot and store the CD28 antibody at -20oC.