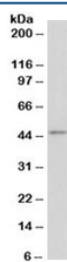


Cd28 Antibody (R34402)

Catalog No.	Formulation	Size
R34402-100UG	0.5 mg/ml in 1X TBS, pH7.3, with 0.5% BSA (US sourced) and 0.02% sodium azide	100 ug

[Bulk quote request](#)

Availability	1-3 business days
Species Reactivity	Mouse
Format	Antigen affinity purified
Host	Goat
Clonality	Polyclonal (goat origin)
Isotype	Goat Ig
Purity	Antigen affinity
Gene ID	12487
Applications	Western Blot : 0.3-1ug/ml ELISA (peptide) LOD : 1:16000
Limitations	This Cd28 antibody is available for research use only.



Western blot testing of mouse thymus lysate with Cd28 antibody at 0.3ug/ml. Expected molecular weight depending on level of glycosylation: ~25-44 kDa (monomer), ~50-90kDa (dimer).

Description

Additional name(s) for this target protein: T-cell-specific surface glycoprotein CD28 antibody

Application Notes

Optimal dilution of the Cd28 antibody should be determined by the researcher.

Immunogen

Amino acids KEKHLCHTQSSPK were used as the immunogen for this Cd28 antibody. The amino acid sequence used as immunogen is from the extracellular portion of the protein.

Storage

Aliquot and store the Cd28 antibody at -20oC.