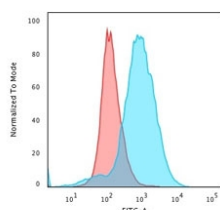


CD28 Antibody PE Conjugate [clone CB28] (V2051PE)

Catalog No.	Formulation	Size
V2051PE-100T	500 ul at 0.1 mg/ml with 0.1 mg/ml BSA (US sourced), 0.05% sodium azide	100 Tests

[Bulk quote request](#)

Availability	1-3 business days
Species Reactivity	Human. Other species not known.
Format	PE Conjugate
Host	Mouse
Clonality	Monoclonal (mouse origin)
Isotype	Mouse IgG1, kappa
Clone Name	CB28
Purity	Protein G affinity chromatography
Gene ID	940 (Human)
Localization	Cell surface
Applications	Flow Cytometry : 1-2ug/million cells Immunofluorescence : 1-3ug/ml
Limitations	This CD28 antibody is available for research use only.



Flow cytometry staining of PFA-fixed human Jurkat cells with unlabeled CD28 antibody (clone CB28); Red=isotype control, Blue= CD28 antibody.

Description

This antibody recognizes a glycoprotein of 44-88kDa, which is identified as CD28. It is the critical T-cell co-stimulatory receptor which provides to the cell the important second activation signal by binding CD80 and CD86 that are expressed by antigen presenting cells. Besides its co-stimulation role, CD28 functions in preventing T-cells from anergic hyporesponsive state or from undergoing premature apoptotic cell death. CD28 is also expressed on human fetal NK cells

and some NK cell lines, whereas on murine NK cells the CD28 expression is much broader.

Application Notes

The concentration stated for each application is a general starting point. Variations in protocols, secondaries and substrates may require the antibody to be titrated up or down for optimal performance.

Immunogen

Recombinant human CD28 protein was used as the immunogen for this antibody.

Storage

Store the CD28 antibody at 2-8°C. Conjugate is light sensitive, store in the dark.

References (3)